

The City of Iqaluit is looking for your input on proposed improvements to the Apex Cemetery

The Apex Cemetery location is a peaceful place for reflection overlooking Tarr Inlet, but the site has struggled with **drainage problems**.

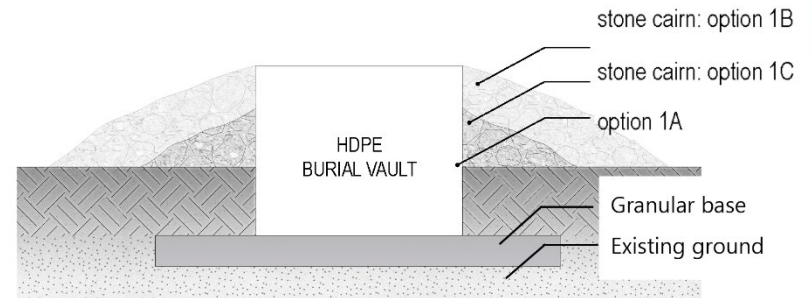
This summer, work will take place to raise the ground at the cemetery by adding granular material and by improving ditching to help with drainage conditions. Improvements to the cemetery's parking lot and pathways will also be made.

To reduce the amount of water accumulating in graves, the City is also considering options for future burial design. These options would be **unique to Iqaluit** and are examples of adapting to **site conditions** and a **changing climate**.

Each option differs in cost and design of the site. The City's cemetery operation and maintenance procedures will be updated to reflect the chosen design. These designs would be reflected in future burials only.

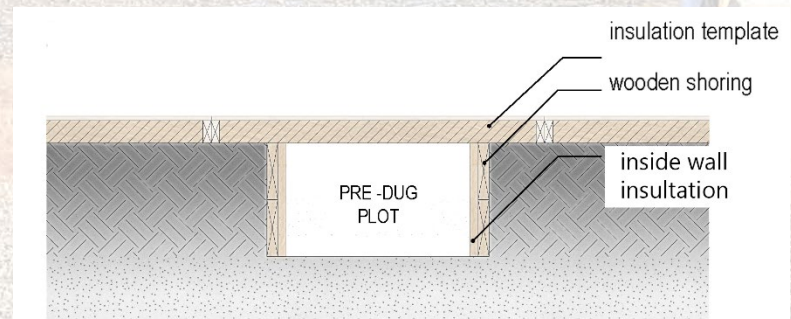
Option 1: Burial Vaults

This option would use above-ground burial vaults made of an industrial plastic called High-Density Polyethylene (HDPE) that are partially inset into the ground. The intent of the above-ground burial vaults is to avoid disturbing the active layer above the permafrost. There are three designs to choose from, with the main difference being the height of the stone cairn alongside the graves.

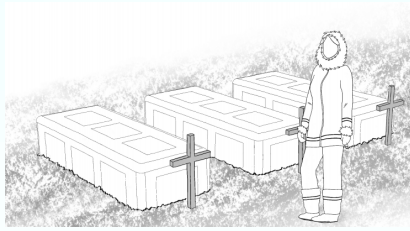
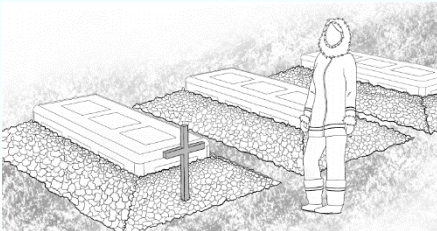
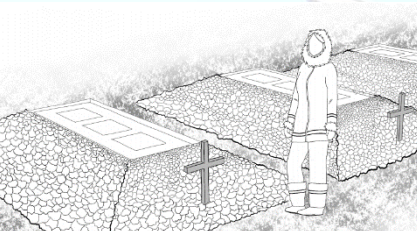
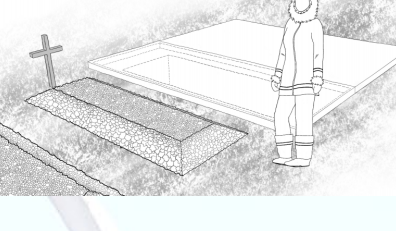


Option 2: Insulated Graves

This option would continue to use the current in-ground wooden burial boxes but with additional insulation. This insulation material would line the top and sides of a pre-dug grave. After a funeral, the surface of a grave would look very similar to existing graves.



Option:

	1-A: Burial Vault with no Stones alongside	1-B: Stones alongside part of the Burial Vault	1-C: Stones alongside to the full height of Burial Vault	2: Insulated Graves
				
ADVANTAGES	<ul style="list-style-type: none"> Eliminates water in graves during funerals Low maintenance requirements 	<ul style="list-style-type: none"> Eliminates water in graves during funerals Low maintenance requirements 	<ul style="list-style-type: none"> Eliminates water in graves during funerals Low maintenance requirements Lowest cost option 	<ul style="list-style-type: none"> Reduces water in graves during funerals No reduction in the amount of graves the cemetery will be able to hold Visually similar to current cemetery
DIS-ADVANTAGES	<ul style="list-style-type: none"> Burial vault more exposed to the elements 	<ul style="list-style-type: none"> Fewer graves can be accommodated at the site due to the space taken up by stones alongside burial vaults 	<ul style="list-style-type: none"> Lowest amount of future graves at the site due to stones alongside burial vaults 	<ul style="list-style-type: none"> Most expensive option Requires most site maintenance May not fully eliminate water in graves
COST	\$	\$\$	\$\$\$	\$\$\$\$
NUMBER OF GRAVES	□ □ □ □ □	□ □ □ □	□ □ □	□ □ □ □ □ □

Give Us Your Thoughts:

- Send an Email: info@iqaluit.ca
- Write a Letter:
City of Iqaluit, PO Box 460
Iqaluit, NU, X0A 0H0

- Call our info line:
867-979-5603
9 – 11:30 a.m.
Monday - Friday

- Radio call-in show:
February 23rd, 12 – 1 p.m.
Nipivut CBC Radio 91.1 FM
867-979-6100

The City of Iqaluit will accept feedback until
March 5th at 4:30 p.m.

