

Drawings and specifications, as instruments of service are the property of the architect. The copyright in the same being reserved to Verne Reimer Architecture Incorporated. No reproduction may be made without the permission of the architect and when made, must bear his name. All prints to be returned to the architect.

The general contractor and/or project manager shall verify dimensions and data noted herein with conditions on the site and is held responsible for reporting any discrepancy to the architect for adjustment. Do not scale the drawings.

CONSULTANTS

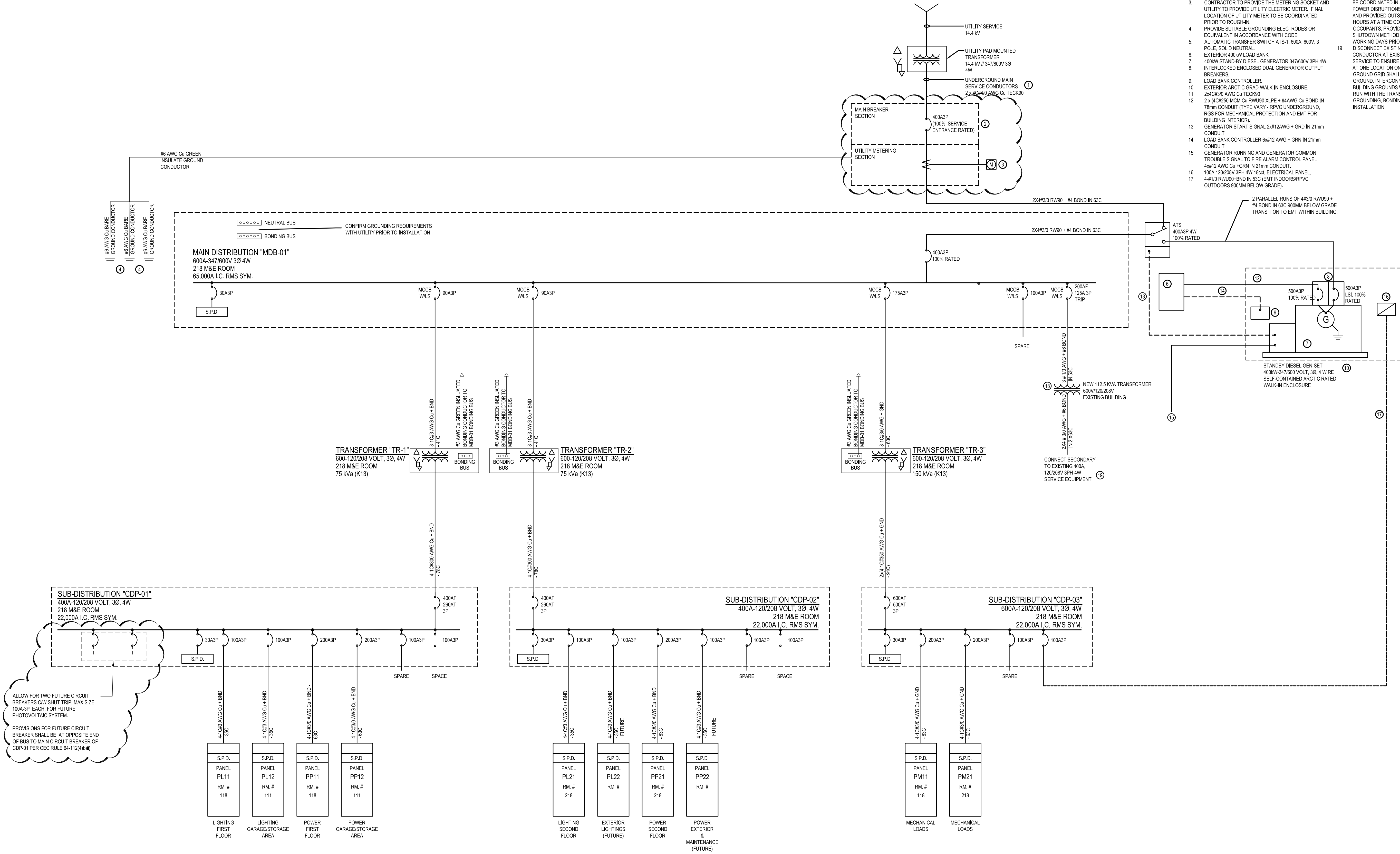
wsp

1900 BUFFALO PLACE
WINNIPEG, MANITOBA
CANADA R3T 1B8
PHONE 204-747-6850
WWW.WSPGROUP.COM

NOT FOR CONSTRUCTION

- GENERAL NOTES:
1. CONTRACTOR TO COORDINATE THE NEW ELECTRICAL SERVICE TO THE ELECTRICAL UTILITY COMPANY.
 2. GROUNDING INSTALLATIONS SHALL BE IN CONFORMANCE WITH SECTION 10 OF THE LATEST EDITION OF THE CANADIAN ELECTRICAL CODE.
 3. ELECTRICAL EQUIPMENT MAY NOT BE ORDERED UNTIL THE SHOP DRAWINGS ARE APPROVED BY CONSULTANT.
 4. BONDING CONDUCTORS AND BONDING JUMPERS SHALL BE BASED FROM TABLE 16 OF THE LATEST EDITION OF THE CANADIAN ELECTRICAL CODE.
 5. PROVIDE A SEPARATE PRICING FOR GENERATOR INSTALLATION INCLUDING ATS AND LOAD BANK.

1. NEW MAIN ELECTRICAL SERVICE CONDUCTORS. COORDINATE PRIOR TO ROUGH-IN.
2. MAIN CIRCUIT BREAKER TO BE SERVICE ENTRANCE RATED. LOCATED IN 116 M&E ROOM MAIN FLOOR.
3. CONTRACTOR TO PROVIDE THE METERING SOCKET AND UTILITY TO PROVIDE UTILITY ELECTRIC METER. FINAL LOCATION OF UTILITY METER TO BE COORDINATED PRIOR TO ROUGH-IN.
4. PROVIDE SUITABLE GROUNDING ELECTRODES OR EQUIVALENT IN ACCORDANCE WITH CODE.
5. AUTOMATIC TRANSFER SWITCH ATS-1, 600A, 800V, 3 POLE, SOLID NEUTRAL.
6. EXTERIOR 400kW LOAD BANK.
7. 400kW STAND-BY DIESEL GENERATOR 347/600V 3PH 4W.
8. INTERLOCKED ENCLOSED DUAL GENERATOR OUTPUT BREAKERS.
9. LOAD BANK CONTROLLER.
10. EXTERIOR ARCTIC GRAD WALK-IN ENCLOSURE.
11. 2x4C930 AWG Cu TEC90.
12. 2 x 4C9250 MCM Cu RVU90 XLPE + #4AWG Cu BOND IN 79mm CONDUIT (TYPE VARY - RPVC UNDERGROUND, RGS FOR MECHANICAL PROTECTION AND EMT FOR BUILDING INTERIOR).
13. GENERATOR START SIGNAL 2x#12AWG + GRD IN 21mm CONDUIT.
14. LOAD BANK CONTROLLER 6x#12 AWG + GRN IN 21mm CONDUIT.
15. GENERATOR RUNNING AND GENERATOR COMMON TROUBLE SIGNAL TO FIRE ALARM CONTROL PANEL 4x#12 AWG Cu + GRN IN 21mm CONDUIT.
16. 100A 120/208V 3PH 4W 180c ELECTRICAL PANEL.
17. 4x#10 RVU90BND IN 53c EMT INDOORS/RPVC OUTDOORS 900MM BELOW GRADE).
18. CONFIRM TRANSFORMER LOCATION WITH EXISTING CONDITIONS. COORDINATE SEQUENCE OF WORK WITH UTILITY AND BUILDING OCCUPANTS. ALL SYSTEMS SHUTDOWNS REQUIRED FOR THIS INSTALLATION SHALL BE COORDINATED IN ADVANCE WITH THE OWNER.
19. POWER DISRUPTIONS SHALL BE KEPT TO A MINIMUM AND PROVIDED OUTSIDE OF REGULAR WORKING HOURS AT A TIME CONVENIENT TO THE BUILDING OCCUPANTS. PROVIDE, IN WRITING, A POWER SHUTDOWN METHOD OF PROCEDURE NO LESS THAN 10 WORKING DAYS PRIOR TO THE SCHEDULED SHUTDOWN. DISCONNECT EXISTING NEUTRAL GROUNDING CONDUCTOR AT EXISTING BUILDING ELECTRICAL SERVICE TO ENSURE THAT THE NEUTRAL IS GROUNDED AT ONE LOCATION ONLY. THE EXISTING BUILDING GROUND GRID SHALL REMAIN AS AN EQUIPOTENTIAL GROUND. INTERCONNECT THE EXISTING AND NEW BUILDING GROUNDS WITH BONDING CONDUCTORS RUN WITH THE TRANSFORMER FEEDERS. VERIFY ALL GROUNDING. BONDING WITH THE UTILITY PRIOR TO INSTALLATION.



1 ELECTRICAL SINGLE LINE DIAGRAM
E600 SCALE: N.T.S.

PERMIT / STAMP		
15	02/06/022	ISSUED FOR ADDENDUM
14	12/05/022	ISSUED FOR CONSTRUCTION
13	29/04/022	ISSUED FOR PRE-TENDER CHECK SET
12	26/03/021	ISSUED FOR CLIENT REVIEW (100%)
11	24/02/021	ISSUED FOR REVIEW
10	17/02/021	ISSUED FOR CLIENT REVIEW (100%)
9	12/02/021	ISSUED FOR COORDINATION
8	05/02/021	ISSUED FOR COORDINATION
7	22/01/021	ISSUED FOR CLASS A ESTIMATE
6	15/01/021	ISSUED FOR COORDINATION
5	12/06/020	ISSUED FOR 95% REVIEW
4	03/11/020	ISSUED FOR OWNER REVIEW
3	03/05/020	ISSUED FOR REVIEW
2	12/20/019	ISSUED FOR REVIEW
1	11/29/019	ISSUED FOR 50% REVIEW
REV	DATE	DESCRIPTION

CITY OF IQALUIT
OPERATIONS CENTRE

1549 FEDERAL ROAD
IQALUIT, NUNAVUT
X0A 0H0

CLIENT PROJECT NO. 820837

TITLE:
ELECTRICAL SINGLE LINE DIAGRAM

SCALE: 1 : 100
PROJECT NUMBER: 2019.00800
DRAWN BY: ABL

E600