

COPYRIGHT:
Drawings and specifications, as instruments of service are the property of the architect, the copyright in the same being reserved to Verne Palmer Architecture Incorporated. No reproduction may be made without the permission of the architect and when made, must bear his name. All prints to be returned to the architect.
The general contractor and/or project manager shall verify dimensions and data noted herein with conditions on the site and is held responsible for reporting any discrepancy to the architect for adjustment. Do not scale the drawings.

www.pearsoned.com

1600 BUFFALO PLACE
WINNIPEG, MANITOBA
CANADA R3T 6B8
PHONE: 204-477-6650
WWW.WSP.COM

1	22/06/02	ISSUED FOR ADDENDUM
0	22/05/12	ISSUED FOR CONSTRUCTION
REV	DATE	DESCRIPTION

CLIENT:
CITY OF IQALUIT
OPERATIONS CENTRE

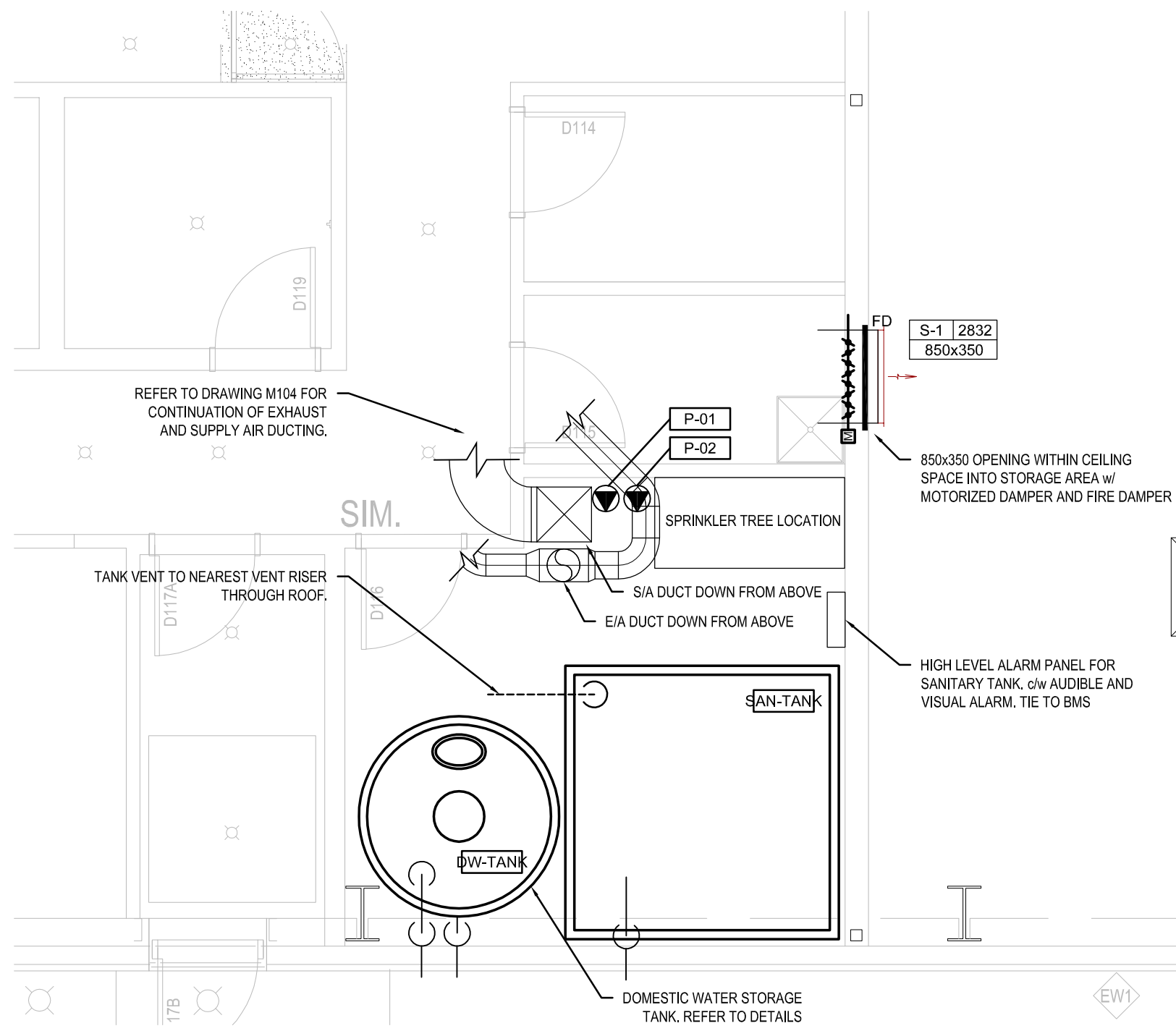
1549 FEDERAL ROAD
IQALUIT, NUNAVUT
X0A 0H0

CLIENT PROJECT NO. 820837

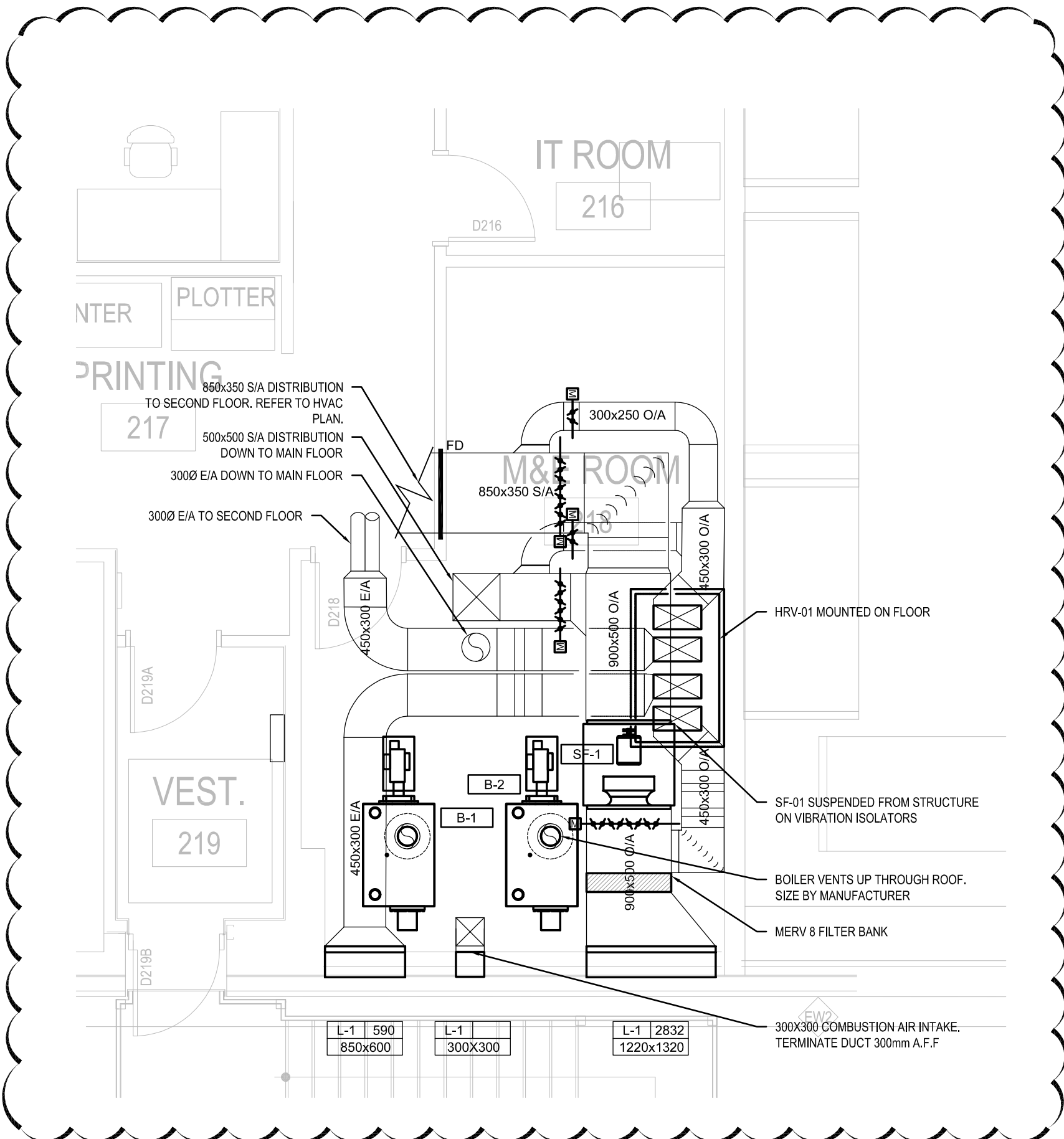
TITLE:
MECHANICAL ROOM PLANS

SCALE: 1 : 100
PROJECT NUMBER: 2019.00800
DRAWN BY: WGC

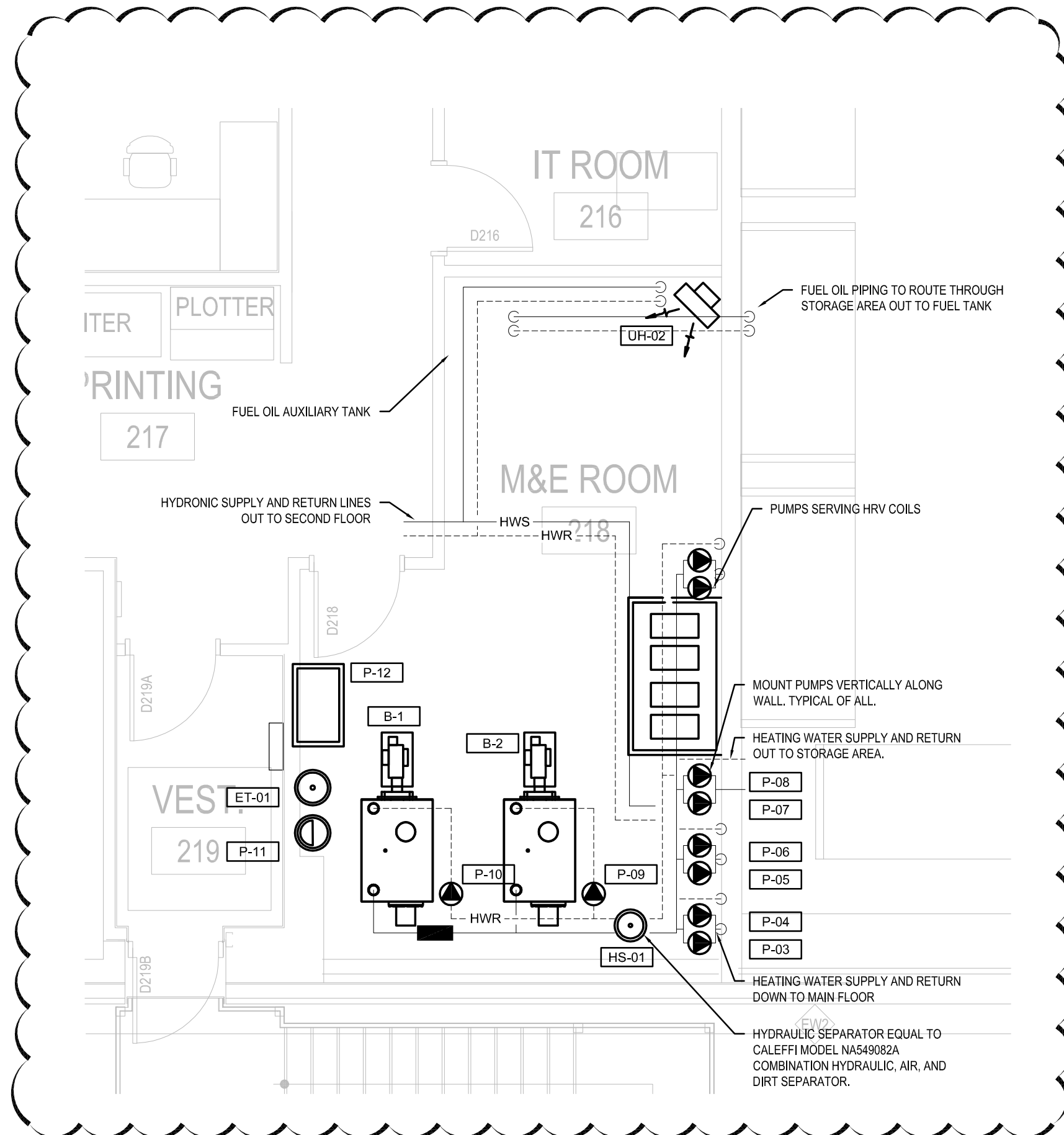
M400



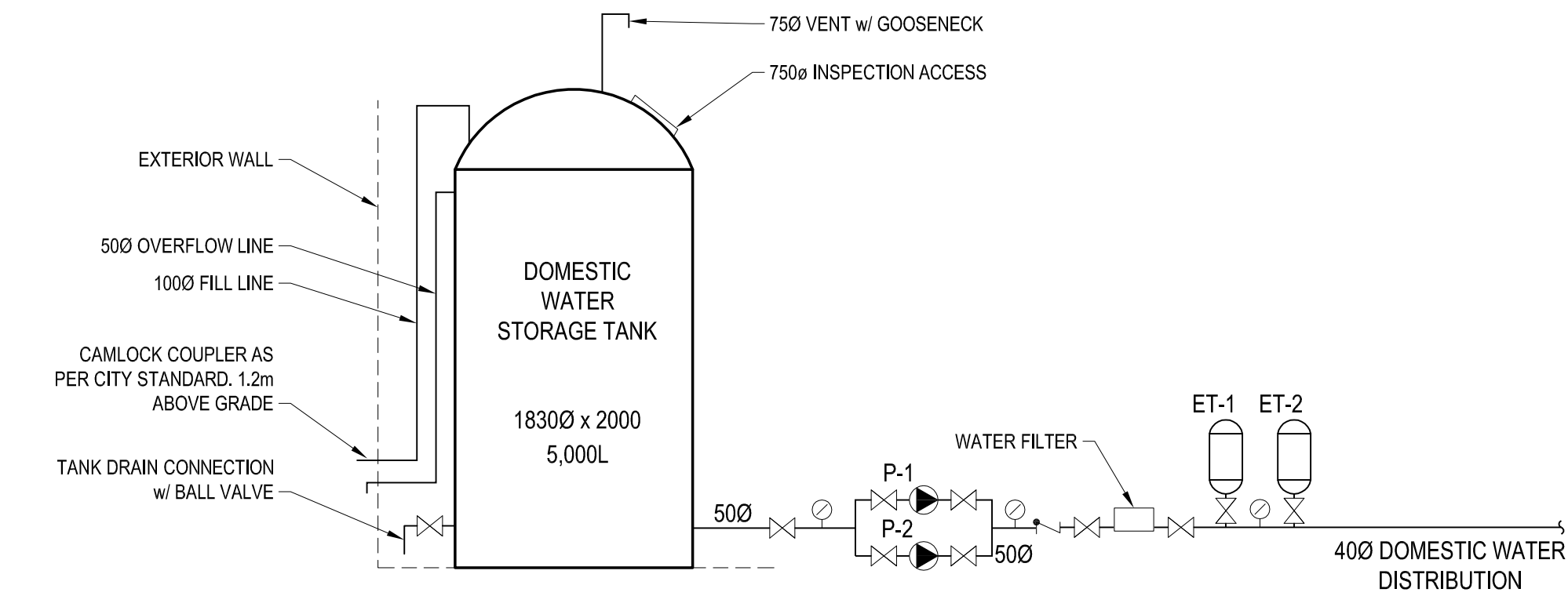
1 MAIN FLOOR MECHANICAL ROOM DETAIL
M400 SCALE: N.T.S.



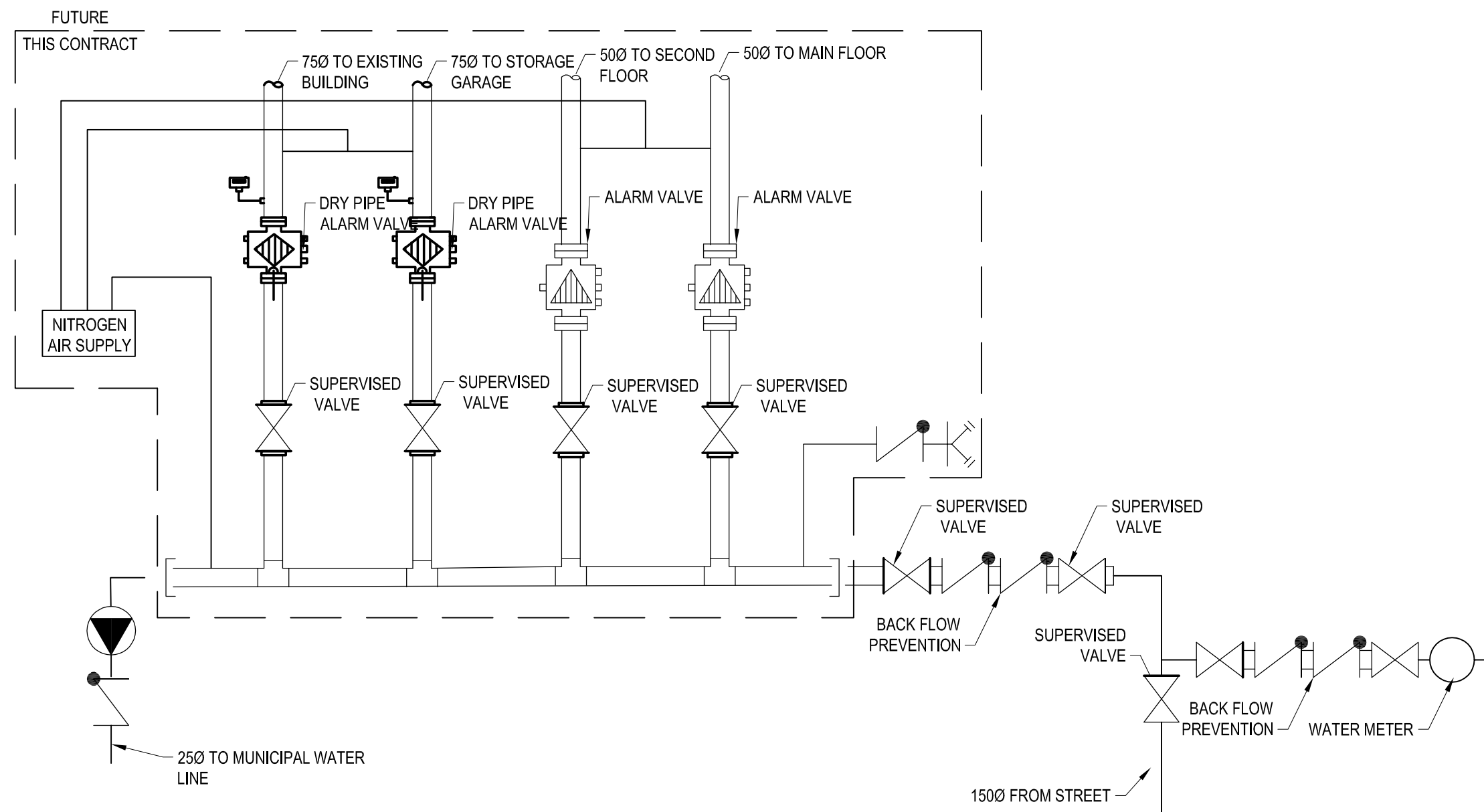
2 SECOND FLOOR MECHANICAL ROOM DETAIL - HVAC
M400 SCALE: N.T.S.



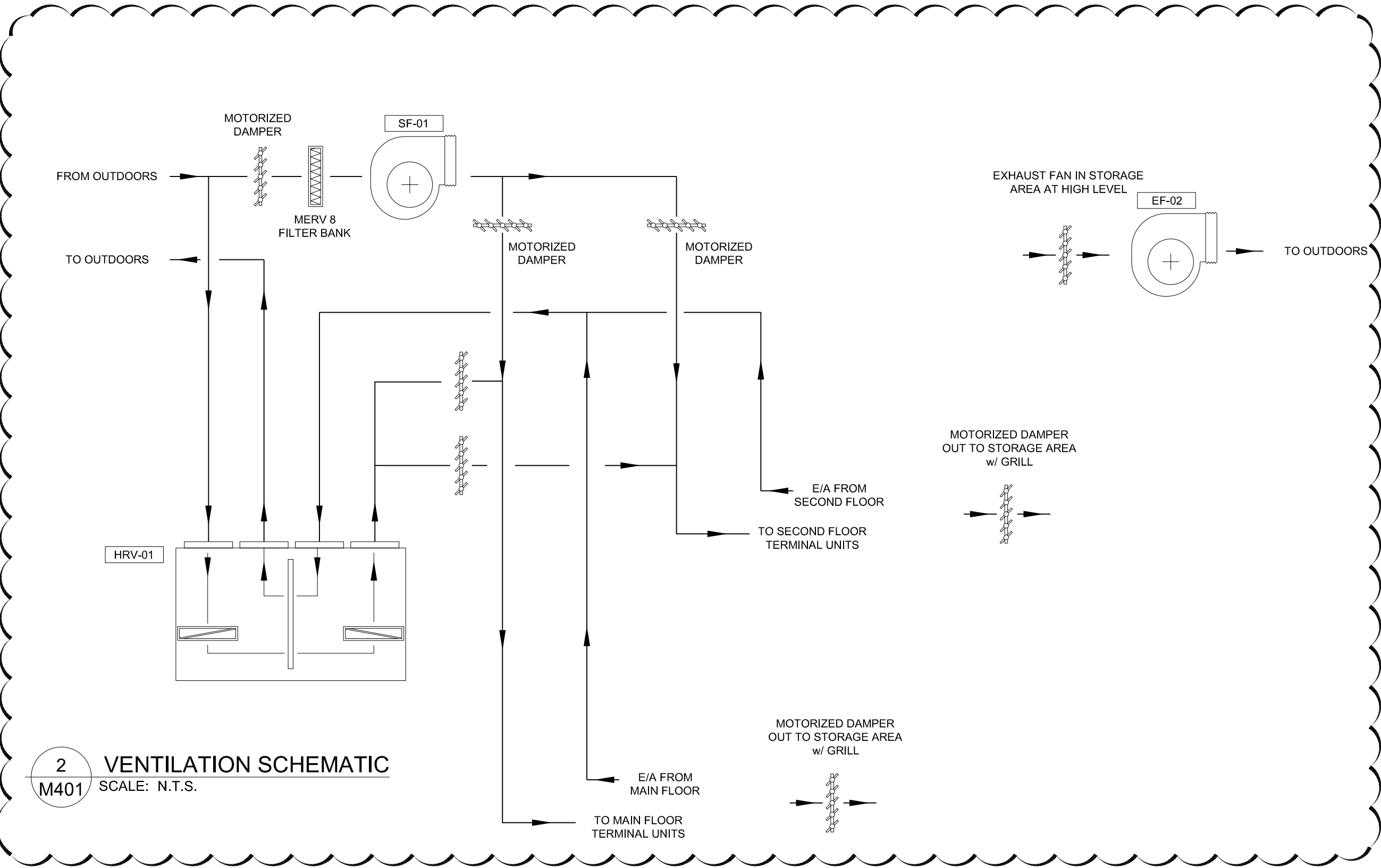
3 SECOND FLOOR MECHANICAL ROOM DETAIL - HYDRONIC
M400 SCALE: N.T.S.



1 DOMESTIC WATER SCHEMATIC
SCALE: N.T.S.



3 DOMESTIC WATETR AND SPRINKLER TREE SCHEMATIC
SCALE: N.T.S.



2 VENTILATION SCHEMATIC
SCALE: N.T.S.

CONSULTANTS:



NOTES:

PERMIT / STAMP:

1	22/06/02	ISSUED FOR ADDENDUM
0	22/05/12	ISSUED FOR CONSTRUCTION
REV	DATE	DESCRIPTION

CLIENT:
CITY OF IQALUIT
OPERATIONS CENTRE

1549 FEDERAL ROAD
IQALUIT, NUNAVUT
X0A 0H0

CLIENT PROJECT NO. 820837

TITLE:
SCHEMATICS

SCALE:
PROJECT NUMBER:
DRAWN BY:

1 : 100
2019.00800
WGC

M401

CONSULTANTS:



NOTES:

PERMIT / STAMP:

1	22/06/02	ISSUED FOR ADDENDUM
0	22/05/12	ISSUED FOR CONSTRUCTION
REV	DATE	DESCRIPTION

CLIENT:
CITY OF IQALUIT
OPERATIONS CENTRE

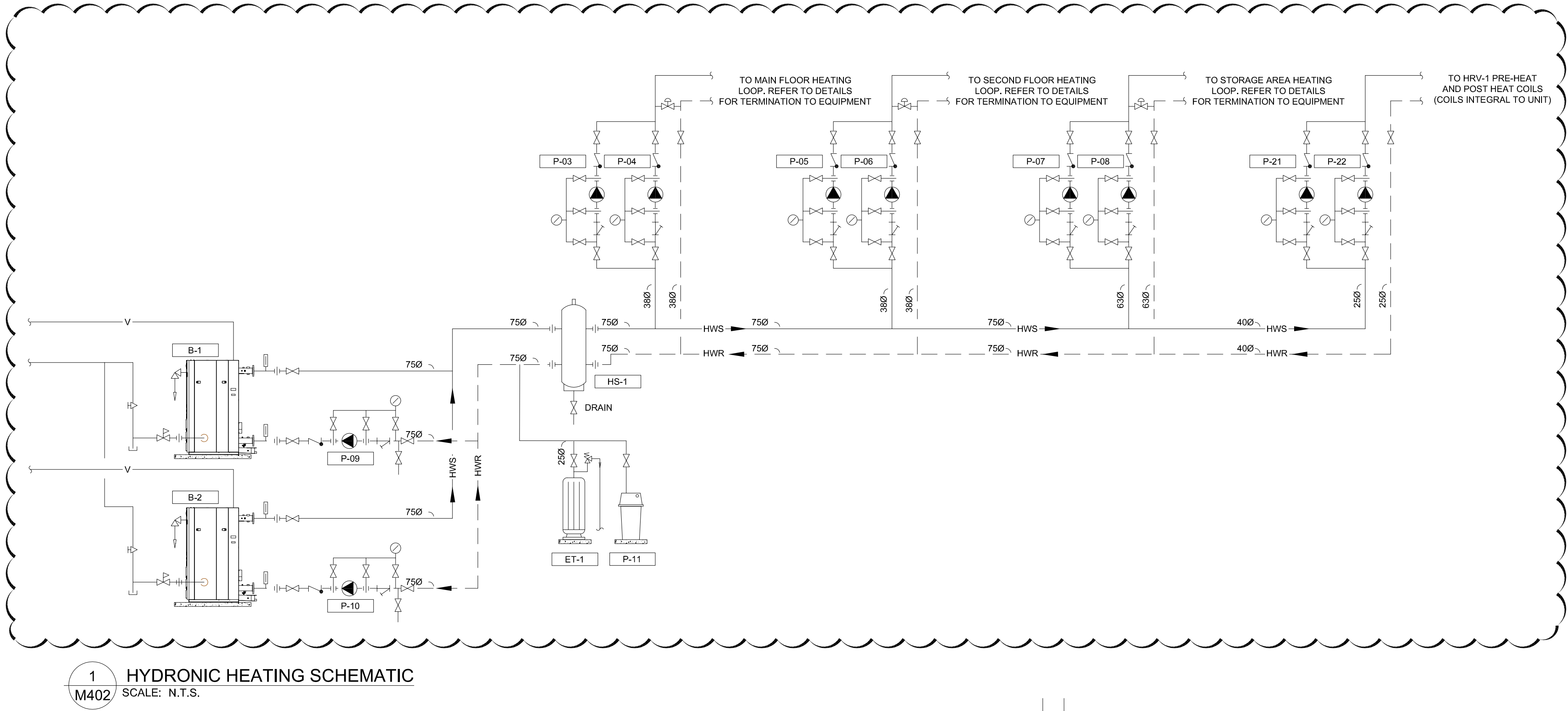
1549 FEDERAL ROAD
IQALUIT, NUNAVUT
X0A 0H0

CLIENT PROJECT NO. 820837

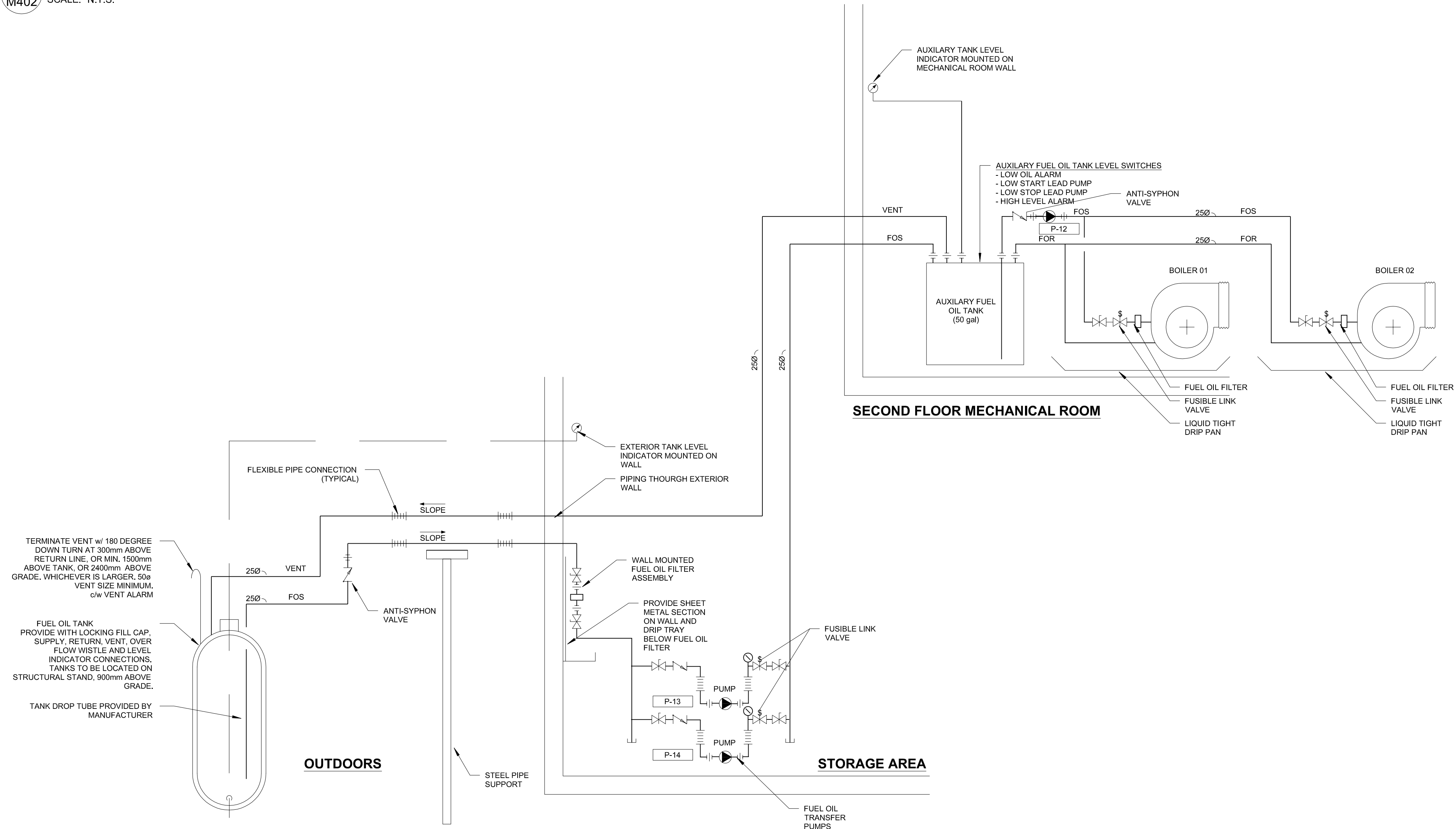
TITLE:
SCHEMATICS

SCALE: 1 : 100
PROJECT NUMBER: 2019.00800
DRAWN BY: WGC

M402



1
M402 HYDRONIC HEATING SCHEMATIC
SCALE: N.T.S.



2
M402 FUEL OIL SCHEMATIC
SCALE: N.T.S.

RADIANT CEILING PANEL (BASED ON STERLING)																								
TAG	SERVICE	WIDTH OF PANEL		# OF TUBES	LENGTH OF ACTIVE RADIANT PANEL		LENGTH OF INACTIVE SECTION		LENGTH OF PANEL		E.W.T.		L.W.T.		CAPACITY		DESIGN		WPD		MANUFACTURER	MODEL	NOTES	
		IN	mm		IN	mm	IN	mm	°C	°F	°C	°F	BTUHR	KW	L/S	GPM	kPa	ft.						
RCP-01	118 - SHARED EQUIPMENT	23.94	608	4	107.75	2,737	12.00	305	119.75	3,042	82	180	71	160	3,286	0.96	0.024	0.38	0.30	0.10	Sterling	LP-24	1, 2	
RCP-02	118 - SHARED EQUIPMENT	23.75	603	4	47.75	1,213	0.00	0	47.75	1,213	82	180	71	160	1,456	0.43	0.010	0.17	0.03	0.01	Sterling	LP-24	1, 2	
RCP-03	127 - EXECUTIVE OFFICE	23.75	603	4	107.75	2,737	12.00	305	119.75	3,042	82	180	71	160	3,286	0.96	0.024	0.38	0.30	0.10	Sterling	LP-24	1, 2	
RCP-04	128 - MEETING ROOM	23.75	603	4	167.75	4,261	24.00	610	191.75	4,870	82	180	71	160	5,116	1.50	0.037	0.58	1.14	0.38	Sterling	LP-24	1, 2	
RCP-05	128 - MEETING ROOM	23.75	603	4	95.75	2,432	24.00	610	119.75	3,042	82	180	71	160	2,920	0.86	0.021	0.33	0.21	0.07	Sterling	LP-24	1, 2	
RCP-06	129 - WORKSTATIONS	23.75	603	4	107.75	2,737	24.00	610	131.75	3,346	82	180	71	160	3,286	0.96	0.024	0.38	0.30	0.10	Sterling	LP-24	1, 2	
RCP-07	129 - WORKSTATIONS	23.75	603	4	215.75	5,480	24.00	610	239.75	6,090	82	180	71	160	6,580	1.93	0.047	0.75	2.43	0.81	Sterling	LP-24	1, 2	
RCP-08	103 - UTR	47.75	1,213	8	47.75	1,213	24.00	610	71.75	1,822	82	180	71	160	2,913	0.85	0.021	0.33	0.21	0.07	Sterling	LP-48	1, 2	
RCP-09	104 - UTR	47.75	1,213	8	47.75	1,213	24.00	610	71.75	1,822	82	180	71	160	2,913	0.85	0.021	0.33	0.21	0.07	Sterling	LP-48	1, 2	
RCP-10	105 - LOCKERS	11.75	298	2	191.75	4,870	48.00	1,219	239.75	6,090	82	180	71	160	3,090	0.91	0.022	0.35	0.24	0.08	Sterling	LP-12	1, 2	
RCP-11	112 - OFFICE	23.75	603	4	47.75	1,213	12.00	305	59.75	1,518	82	180	71	160	1,456	0.43	0.010	0.17	0.03	0.01	Sterling	LP-24	1, 2	
RCP-12	112 - OFFICE	23.75	603	4	47.75	1,213	12.00	305	59.75	1,518	82	180	71	160	1,456	0.43	0.010	0.17	0.03	0.01	Sterling	LP-24	1, 2	
RCP-13	122 - FILING	11.75	298	2	47.75	1,213	12.00	305	59.75	1,518	82	180	71	160	769	0.23	0.006	0.09	0.00	0.00	Sterling	LP-12	1, 2	
RCP-14	123 - OFFICE	11.75	298	2	47.75	1,213	12.00	305	59.75	1,518	82	180	71	160	769	0.23	0.006	0.09	0.00	0.00	Sterling	LP-12	1, 2	
RCP-15	124 - OFFICE	11.75	298	2	47.75	1,213	12.00	305	59.75	1,518	82	180	71	160	769	0.23	0.006	0.09	0.00	0.00	Sterling	LP-12	1, 2	
RCP-16	125 - OFFICE	11.75	298	2	47.75	1,213	12.00	305	59.75	1,518	82	180	71	160	769	0.23	0.006	0.09	0.00	0.00	Sterling	LP-12	1, 2	
RCP-17	126 - OFFICE	11.75	298	2	47.75	1,213	12.00	305	59.75	1,518	82	180	71	160	769	0.23	0.006	0.09	0.00	0.00	Sterling	LP-12	1, 2	
RCP-18	119 - UTR	11.75	298	2	47.75	1,213	12.00	305	59.75	1,518	82	180	71	160	769	0.23	0.006	0.09	0.00	0.00	Sterling	LP-12	1, 2	
RCP-19	119 - UTR	11.75	298	2	47.75	1,213	12.00	305	59.75	1,518	82	180	71	160	769	0.23	0.006	0.09	0.00	0.00	Sterling	LP-12	1, 2	
RCP-20	122 - FILING	11.75	298	2	47.75	1,213	12.00	305	59.75	1,518	82	180	71	160	769	0.23	0.006	0.09	0.00	0.00	Sterling	LP-12	1, 2	
RCP-21	113 - STAFF HUB	11.75	298	2	143.75	3,651	24.00	610	167.75	4,261	82	180	71	160	2,316	0.68	0.017	0.26	0.10	0.03	Sterling	LP-12	1, 2	
RCP-22	113 - STAFF HUB	11.75	298	2	143.75	3,651	24.00	610	167.75	4,261	82	180	71	160	2,316	0.68	0.017	0.26	0.10	0.03	Sterling	LP-12	1, 2	
RCP-23	202 - MEETING ROOM	23.75	603	4	143.75	3,651	24.00	610	167.75	4,261	82	180	71	160	4,384	1.28	0.032	0.50	0.72	0.24	Sterling	LP-24	1, 2	
RCP-24	202 - MEETING ROOM	23.75	603	4	143.75	3,651	0.00	0	143.75	3,651	82	180	71	160	4,384	1.28	0.032	0.50	0.72	0.24	Sterling	LP-24	1, 2	
RCP-25	202 - MEETING ROOM	23.75	603	4	143.75	3,651	0.00	0	143.75	3,651	82	180	71	160	4,384	1.28	0.032	0.50	0.72	0.24	Sterling	LP-24	1, 2	
RCP-26	207 - WASHROOM	47.75	1,213	8	47.75	1,213	12.00	305	59.75	1,518	82	180	71	160	2,913	0.85	0.021	0.33	0.21	0.07	Sterling	LP-48	1, 2	
RCP-27	208 - WASHROOM	47.75	1,213	8	47.75	1,213	12.00	305	59.75	1,518	82	180	71	160	2,913	0.85	0.021	0.33	0.21	0.07	Sterling	LP-48	1, 2	
RCP-28	209 - ENGINEERING STORAGE	35.75	908	6	143.75	3,651	48.00	1,219	191.75	4,870	82	180	71	160	5,991	1.76	0.043	0.68	2.01	0.67	Sterling	LP-36	2	
RCP-29	210 - STAFF HUB	23.75	603	4	191.75	4,870	48.00	1,219	239.75	6,090	82	180	71	160	5,848	1.71	0.042	0.67	1.70	0.57	Sterling	LP-24	1, 2	
RCP-30	210 - STAFF HUB	23.75	603	4	191.75	4,870	48.00	1,219	239.75	6,090	82	180	71	160	5,848	1.71	0.042	0.67	1.70	0.57	Sterling	LP-24	1, 2	
RCP-31	210 - STAFF HUB	23.75	603	4	95.75	2,432	24.00	610	119.75	3,042	82	180	71	160	2,920	0.86	0.021	0.33	0.21	0.07	Sterling	LP-24	1, 2	
RCP-32	213 - LAND STORAGE	23.75	603	4	71.75	1,822	96.00	2,438	167.75	4,261	82	180	71	160	2,188	0.64	0.016	0.25	0.09	0.03	Sterling	LP-24	1, 2	
RCP-33	213 - LAND STORAGE	23.75	603	4	71.75	1,822	96.00	2,438	167.75	4,261	82	180	71	160	2,188	0.64	0.016	0.25	0.09	0.03	Sterling	LP-24	1, 2	
RCP-34	215 - JANITOR	23.75	603	4	47.75	1,213	12.00	305	59.75	1,518	82	180	71	160	1,456	0.43	0.010	0.17	0.03	0.01	Sterling	LP-24	1, 2	
RCP-35	216 - IT ROOM	11.75	298	2	47.75	1,213	12.00	305	59.75	1,518	82	180	71	160	769	0.23	0.006	0.09	0.00	0.00	Sterling	LP-12	1, 2	
RCP-36	221 - PLANNING & DEVELOPMENT DIR.	44.00	1,118	8	95.75	2,432	12.00	305	107.75	2,737	82	180	71	160	3,991	1.17	0.029	0.46	0.59	0.20	Sterling	LP-36	1, 2	
RCP-37	222 - LAND ADMINISTRATION	44.00	1,118	8	71.75	1,822	24.00	610	95.75	2,432	82	180	71	160	4,377	1.28	0.031	0.50	0.71	0.24	Sterling	LP-48	1, 2	
RCP-38	223 - LAND ADMINISTRATION	44.00	1,118	8	71.75	1,822	24.00	610	95.75	2,432	82	180	71	160	4,377	1.28	0.031	0.50	0.71	0.24	Sterling	LP-48	1, 2	
RCP-39	224 - ENG. & CAP. PLANNING MGR.	44.00	1,118	8	71.75	1,822	24.00	610	95.75	2,432	82	180	71	160	4,377	1.28	0.031	0.50	0.71	0.24	Sterling	LP-48	1, 2	
RCP-40	225 - ENG. & CAP. PLANNING DIR.	23.75	603	4	95.75	2,432	0.00	0	95.75	2,432	82	180	71	160	2,920	0.86	0.021	0.33	0.21	0.07	Sterling	LP-24	1, 2	
RCP-41	225 - ENG. & CAP. PLANNING DIR.	11.75	298	2	119.75	3,042	0.00	0	119.75	3,042	82	180	71	160	1,930	0.57	0.014	0.22	0.06	0.02	Sterling	LP-12	1, 2	
RCP-42	225 - ENG. & CAP. PLANNING DIR.	23.75	603	4	47.75	1,213	12.00	305	59.75	1,518	82	180	71	160	1,456	0.43	0.010	0.17	0.03	0.01	Sterling	LP-24	1, 2	
RCP-43	225 - ENG. & CAP. PLANNING DIR.	23.75	603	4	95.75	2,432	12.00	305	107.75	2,737	82	180	71	160	2,920	0.86	0.021	0.33	0.21	0.07	Sterling	LP-24	1, 2	
RCP-44	230 - WORKSTATIONS	23.75	603	4	167.75	4,261	12.00	305	179.75	4,566	82	180	71	160	5,116	1.50	0.037	0.58	1.14	0.38	Sterling	LP-24	1, 2	
RCP-45	230 - WORKSTATIONS	23.75	603	4	191.75	4,870	12.00	305	203.75	5,175	82	180	71	160	5,848	1.71	0.042	0.67	1.70	0.57	Sterling			

PLUMBING FIXTURE SCHEDULE								
TAG	DESCRIPTION	MANUFACTURER	MODEL	TRAP	CONNECTIONS			REMARKS
					CW	HW	WASTE	
WC-1	WATER CLOSET (WALL MOUNT) SECOND FLOOR	AMERICAN STANDARD	AFWALL MILLENNIUM FLOWWISE ELONGATED TOILET, VITREOUS CHINA WITH ANTIMICROBIAL SURFACE, ELONGATED BOWL, WHITE FINISH, WALL HUNG	INTERNAL	25mm (1")	N/A	76mm (3")	AMERICAN STANDARD AFWALL MILLENNIUM FLOWWISE ELONGATED #3351101.020 HET TOILET, VITREOUS CHINA WITH EVERCLEAN ANTIMICROBIAL SURFACE WHICH INHIBITS THE GROWTH OF STAIN AND ODOR CAUSING BACTERIA MOLD AND MILDEW. ELONGATED BOWL, WHITE FINISH, WALL HUNG, SIPHON JET FLUSH ACTION, OPERATES IN THE RANGE OF 4.2 L TO 6 L (1.1 US GAL TO 1.6 US GAL) PER FLUSH, CONDENSATE CHANNEL, 305 MM X 254 MM (12" X 10") WATER SURFACE, SIPHON JET FLUSH ACTION, CONDENSATE CHANNEL, ELONGATED BOWL, 54 MM (2-1/8") FULLY GLAZED INTERNAL TRAPWAY, TOILET SEAT NOT INCLUDED, 38 MM (1-1/2") DIA TOP SPUD, CENTOCO #202ST.001 TOILET SEAT, EXTRA HEAVY DUTY, FOR ELONGATED BOWL, OPEN FRONT, SOLID PLASTIC, WITH COVER, STAINLESS STEEL CHECK KINGS, METAL FLAT WASHERS STAINLESS STEEL POSTS AND NUTS, SLOAN CROWN #CROWN 111-1.6, EXPOSED MANUAL FLUSHOMETER FOR TOP SPUD TOILET, 6 L (1.6 US GAL) FACTORY SET FLOW, FIXED VOLUME PISTON WITH FILTERED O-RING BYPASS, NON-HOLD OPEN FEATURE, A D A OSCILLATING HANDLE, V.P. SMOOTH DESIGN STOP CAP ON BAK-CHEK ANGLE STOP (SCREWDRIVER OPERATED), FLUSH TUBE FOR 292 MM (11-1/2") ROUGH-IN, HIGH PRESSURE VACUUM BREAKER SLOAN TP TRAP PRIMER FOR TOP SPUD TOILET FLUSH VALVE ACTIVATED DURING FLUSH VALVE OPERATION, PROVIDES A SMALL AMOUNT OF WATER TO FLOOR DRAIN, ONLY ONE NEEDED PER BATHROOM. SLOAN VU SEAT BUMPER ON WATTS #ISCA-101-D-M11 DOUBLE HORIZONTAL ADJUSTABLE TOILET CARRIER MOUNTED ON CONCRETE FLOOR, ALL EPOXY COATED CAST IRON FITTING, ADJUSTABLE ABS SLIDE NIPPLE WITH INTEGRAL TEST CAP AND NEOPRENE BOWL GASKET, WASTED PLATED HARDWARE, CHROME CAP NUTS, TILING FRAME, 102 MM (4") NO HUB WASTE, 51 MM (2") NO HUB VENT, 158 X 46 (350 LBS) STATIC LOAD, 406 MM (16") FINISHED METAL STUD WALL TO FINISHED METAL STUD WALL.
WC-2	WATER CLOSET (FLOOR MOUNT MACERATING)	LIBERTY PUMPS	ASCENT II - ESW	INTERNAL	25mm (1/2")	N/A	76mm (3")	ASCENT II MACERATING TOILET SYSTEM, 1.28 GPF HIGH EFFICIENCY TOILET FOR A MACERATING SYSTEM, PUMP UP TO 25' VERTICALLY AND 150 HORIZONTALLY THROUGH A 1" DISCHARGE PIPE. BUILT-IN ALARM AND LED LIGHTS WITH EXTERNAL TOUCHPAD FOR ALARM SILENCE AND MANUAL OVERRIDE. ELONGATED BOWL WITH INSULATED TANK AND SEAT.
LAV-1	LAVATORY	AMERICAN STANDARD	MURRO WITH ANTIMICROBIAL BASIN, 3 HOLES, VITREOUS CHINA, WHITE FINISH, CARRIER WITH CONCEALED ARMS, REAR OVERFLOW, RECESSED SELF-DRAINING FAUCET LEDGE.	32mm (1 1/4") WITH CLEANOUT PLUG	13mm (1/2")	13mm (1/2")	32mm (1 1/4")	AMERICAN STANDARD MURRO WITH EVERCLEAN #0954.004EC.020 BASIN, 3 HOLES, 4" (102 MM) CENTER, 540 MM X 520 MM X 185 MM (21-1/4" X 20-1/2" X 6-1/2") HIGH, VITREOUS CHINA, WHITE FINISH, FOR CARRIER WITH CONCEALED ARMS, REAR OVERFLOW, RECESSED SELF-DRAINING FAUCET LEDGE. AMERICAN STANDARD COLONY PRO #7075.200.002 TWO HANDLES FAUCET, POLISHED CHROME FINISH, 1/4 TURN WASHERLESS CERAMIC DISC VALVE, CARRIER, 4.5 L (1.2 GAL) MIN. ASBATOR OUTLET, METAL SPOUT, 114 MM (4-1/2") PROJECT REACH, METAL LEVER HANDLES, METAL POP-UP DRAIN, 1400-88820, POINT OF USE THERMOSTATIC WATER MIXING VALVE, NICKEL PLATED BRASS BODY, TEMPERATURE ADJUSTING SPINDLE, 10 MM (3/8") INLETS AND OUTLET FNPT CONNECTIONS, INTEGRAL CHECKS, OFFER TEMPERATURE RANGE BETWEEN 35 °C (95 °F) AND 46 °C (114.8 °F), SET VALVE FACTORY SET AT 46 °C (114.8 °F), PROVIDE FAUCET SUPPLIES, CHROME PLATED FINISH ALL METAL CONSTRUCTION, LIGHT DUTY RESIDENTIAL ANGLE STOPS, ESCUTCHEONS AND FLEXIBLE METAL RISERS, LOW LEAD, MCGUIRE #8872C P-TRAP, HEAVY CAST BRASS ADJUSTABLE BODY, WITH SLIP NUT, 32 MM (1-1/4") SIZE, SHALLOW WALL FLANGE AND SEAMLESS TUBULAR WALL BEND. MCGUIRE PROV/RAP #PW2000 SANITARY COVERING VANDAL-RESISTANT, FLEXIBLE SEAMLESS MOULDED CLOSED-CELL PVC RESIN, FORMULATED WITH ANTI-MICROBIAL ADDITIVE TO LIMIT THE GROWTH OF FUNGUS AND BACTERIA, TO EXPOSED PIPING (TO PROTECT AGAINST HEAT/CONTUSIONS) AS PER LOCAL CODES. WATTS #CA-421 FIVE STAR CARRIER, UNIVERSAL STEEL HANGAR SUPPORT PLATES WITH INTEGRAL MOUNTING BRACKETS, HEAVY GAUGE EPOXY COATED STEEL UPRIGHTS WITH WELDED FEET. FOR ONE UNIT: 102 MM (4") FOR TWO TO SIX UNITS IN A ROW: 152 MM (6") FINISHED METAL STUD WALL TO BACK OF PIPE SPACE.
MS-1	JANITOR SINK (MOP SINK)	FIAT	MSB2424100 SQUARE SERVICE / MOP SINK	YES	13mm (1/2")	13mm (1/2")	76mm (3")	MSB2424100 SQUARE SERVICE / MOP SINK, 610 MM (24") WIDE X 610 MM (24") LONG X 254 MM (10") HIGH DEEP, FLOOR MOUNTED, MOLDED STONE, WHITE, PLAIN CURBS, STAINLESS STEEL DRAIN WITH STRAINER, 3" (76 MM) OUTLET.
SK-1	SINK	FRANKE	LBD6408-1/1 DOUBLE BOWL COUNTERTOP MOUNT SINK, 1 HOLE, 794 MM (31-1/4") WIDE X 521 MM (20-1/2") LONG X 203 MM (8") HIGH DEEP, SPILLWAY, COUNTER MOUNTED, BACKLEDGE	38mm (1 1/2") P-TRAP, CAST BRASS WITH CLEANOUT	13mm (1/2")	13mm (1/2")	38mm (1 1/2")	FRANKE COMMERCIAL #LBD6408-1/1 DOUBLE BOWL COUNTERTOP MOUNT SINK, 1 HOLE, 794 MM (31-1/4") WIDE X 521 MM (20-1/2") LONG X 203 MM (8") HIGH DEEP, SPILLWAY, COUNTER MOUNTED, BACKLEDGE, GRADE 18-10 20 GA. (0.9 MM) TYPE 302 STAINLESS STEEL, SELF-RIMMING, SATIN FINISH RIM AND BOWLS, MOUNTING KIT PROVIDED, FULLY UNDERCUT TO REDUCE CONDENSATION AND RESONANCE, FACTORY APPLIED RIM SEAL, 3-1/2" (89 MM) CTR. WITH 1-1/2" (38 MM) TAIL PIECE. CHICAGO FAUCETS #4812-ABCP SINGLE HANDLE FAUCET, CHROME PLATED FINISH, CENTER HOLE ONLY, ECOST CONSTRUCTION LEAD FREE (EQUAL OR LESS THAN 0.25%) ECOST BRASS CONSTRUCTION, VOLUME CONTROL AND HOT WATER LIMIT STOP CARTRIDGE, 5.7 TON (1.5 GPM) PRESSURE COMPENSATING LAMINAR FLOW (NON-ERATING) OUTLET, 241 MM (9-1/2") PROJECTION RIGID CAST BRASS SPOUT, SINGLE METAL LEVER HANDLE, MCGUIRE #LFHST08LKB5 FAUCET SUPPLIES, CHROME PLATED FINISH POLISHED BRASS, HEAVY PATTERN SUPPLY STOP VALVE WITH TURN BRASS STEM, 13 MM (1/2") I.D. INLET AND O.D. OUTLET. V.P. LOOSE KEYS, ECOST CONSTRUCTION LEAD FREE (EQUAL OR LESS THAN 0.25%), MCGUIRE #8912CB P-TRAP, HEAVY CAST BRASS ADJUSTABLE BODY, WITH SLIP NUT, 38 MM (1-1/2") SIZE, BOX FLANGE AND SEAMLESS TUBULAR WALL BEND.
EP-01	SEWAGE PUMP	LIBERTY PUMPS	P382LE51SD-2/A2W	N/A	N/A	N/A	50mm (2")	SIMPLEX SEWAGE PUMP PACKAGE COMPLETE WITH 155 L (41 GAL) POLYETHYLENE TANK MAXIMUM 610 mm (24") HIGH, 1/2 HP SEWAGE PUMP, HIGH LEVEL ALARM.
FD-1	FLOOR DRAIN	WATTS	FD-320-Y-1-7	51mm (2") P-TRAP	N/A	N/A	51mm (2")	WATTS #FD-320-Y-1-7 FLOOR DRAIN - EPOXY COATED CAST IRON BODY, TRAP PRIMER CONNECTION WITH PLUG, ANCHOR FLANGE AND WEEPHOLES, NO HUB OUTLET WATTS -1-7-7/8" (200 MM) DIAMETER NICKEL BRONZE VENEERED, HEEL-PROOF ROUND GRATE.
EW-1	EMERGENCY EYE/FACE WASH	HAWS	MODEL #7360B EMERGENCY EYE/FACE WASH, WALL HUNG, STAINLESS STEEL RECEPTOR, DUAL AERATION SPRAY WASH WITH FLIP-TOP DUST COVERS, MIN. 19 LPM (5.0 GPM) FLOW, VOLUME REGULATOR, 100 MICRON IN-LINE FILTER, IN-LINE BRASS STRAINER.	38mm (1 1/2")	13mm (1/2")	13mm (1/2")	38mm (1 1/2")	C/W: S.S. PUSH HANDLE BALL VALVE WITH S.S. TRIM, ALL FACTORY ASSEMBLED, WALL HANGER AND EMERGENCY SIGN. HAWS #9201EW SUPPLY FIXTURE, THERMOSTATIC TEMPERATURE CONTROL VALVE, ALL BRASS AND STAINLESS STEEL DESIGN, WITH LIQUID FILLED METER, CHECK STOPS, SAFETY SHUT-OFF SHOULD COLD WATER SUPPLY FAIL, HOT WATER FAILURE WILL ALLOW COLD WATER FLOW THROUGH BOTH THE FIXED AND VARIABLE BY-PASS, OUTLET TEMPERATURE GAUGE, 1/2" (13mm) SUPPLIES. TEMPERED WATER FACTORY SET AT 80°F (26°C) [MODEL #9201EW PROVIDES UP TO 25.6 LPM (7 GPM) AT 30PSI (246KPA) DROP THROUGH VALVE].
MV-1	MIXING VALVE	SYMMONS	MODEL #5-120-CK	N/A	13mm (1/2")	13mm (1/2")	N/A	SYMMONS 'THERMIXER' #5-120-CK THERMOSTATIC MIXING VALVE C/W POSITIVE CONTROL, HEAVY DUTY ALL CAST BRASS BODY AND STAINLESS STEEL INTERNAL PARTS, LOCKABLE TEMP. SETTING, WITH IN-LINE STRAINERS CHECKS INSTALLED IN H & CW SUPPLIES TO PROVIDE TEMPERED WATER TO HOT SIDE OF FAUCET. CAPACITY 6 GPM (23 LPM) SIZED AT 20 PSI (69 KPA) DROP THRU VALVE. TEMPERATURE RANGE 85°F (29.5°C) TO 160°F (71°C) SET VALVE AT 120°F (48.9°C), PROVIDE TEE ADAPTORS, AND FLEX. COPPER TUBING TO SUIT.
HR-1	HOSE REEL (GARAGE)	REELCRAFT	MODEL # EP3705-39-16AL20FIUR-HEAVY DUTY CARBON STEEL POWERED BY 115VACXP MOTOR	N/A	51mm (2")	N/A	N/A	C/W: 1/2" (13mm) PICH CHAIN & SPROCKETS INCLUDING AN IDLER. THE REEL WILL HAVE A CHAIN GUARD, CAST ALUMINUM FLUID PATH WITH A STRAIGHT 2" (51mm) MALE VICTAULIC FITTING FOR THE INLET AND 2" (51mm) FEMALE NPT GOOSNECK (OUTLET), MINIMUM 22 FEET OF GOODYEAR MODEL# HORIZON-200 1 1/2" (38mm) ID WATER HOSE MAX. WP-200 PSI, WEIGHT 0.86 LB/FT (1.28 KG/M), TUBE: VESIGARD R SYNTHETIC RUBBER, RMA CLASS C, REINFORCEMENT: SPIRAL SYNTHETIC YARN, COVER BLACK, TEMPERATURE: -40°F TO 190°F (-40°C TO 88°C)

PUMP SCHEDULE												
TAG	SERVICE	LOCATION	MANUFACTURER	MODEL	FLOW RATE		HEAD		MOTOR			NOTES
					L/s	gpm	kPa	ft.WC	Kw	HP	RPM	
P-1	DOMESTIC WATER PUMP	MAINFLOOR MECH. ROOM	GRUNDFOS	CR 3-6 H-GA-A-E-HQGE	0.80	12.6	458.2	153.3	0.75	1.00	3,450	1, 3, 4
P-2	DOMESTIC WATER PUMP	MAINFLOOR MECH. ROOM	GRUNDFOS	CR 3-6 H-GA-A-E-HQGE	0.80	12.6	458.2	153.3	0.75	1.00	3,450	1, 3, 4
P-3	MAIN FLOOR HEATING	2ND FLOOR MECH. ROOM	GRUNDFOS	MAGNA3 32-120	1.09	17.2	22.1	7.4	0.19	0.25	2,277	1,2,4
P-4	MAIN FLOOR HEATING	2ND FLOOR MECH. ROOM	GRUNDFOS	MAGNA3 32-120	1.09	17.2	22.1	7.4	0.19	0.25	2,277	1,2,4
P-5	2nd FLOOR HEATING	2ND FLOOR MECH. ROOM	GRUNDFOS	MAGNA3 32-120	1.03	16.3	46.0	15.4	0.19	0.25	3,069	1,2,4
P-6	2nd FLOOR HEATING	2ND FLOOR MECH. ROOM	GRUNDFOS	MAGNA3 32-120	1.03	16.3	46.0	15.4	0.19	0.25	3,069	1,2,4
P-7	GARAGE/STORAGE HEATING	2ND FLOOR MECH. ROOM	GRUNDFOS	MAGNA3 40-80	2.56	40.6	29.9	10.0	0.29	0.38	2,977	1,2,4
P-8	GARAGE/STORAGE HEATING	2ND FLOOR MECH. ROOM	GRUNDFOS	MAGNA3 40-80	2.56	40.6	29.9	10.0	0.29	0.38	2,977	1,2,4
P-9	BOILER PUMP	2ND FLOOR MECH. ROOM	GRUNDFOS	MAGNA3 40-120	5.68	80.0	9.0	3.0	0.45	0.60	2,596	1,2,4
P-10	BOILER PUMP	2ND FLOOR MECH. ROOM	GRUNDFOS	MAGNA3 40-120	5.68	80.0	9.0	3.0	0.45	0.60	2,596	1,2,4
P-11	GLYCOL FILL STATION PUMP	2ND FLOOR MECH. ROOM	AXIOM	SF-100	0.06	1.0	345.0	115.4	-	-	-	6
P-12	FUEL OIL TRANSFER PUMP	2ND FLOOR MECH. ROOM	VIKING PUMPS	SG-04	0.23 - 1.89 LPM	0.06-0.50	34 Bar	500 psi	-	0.50	-	-
P-13	FUEL OIL TRANSFER PUMP	FUEL TANK	VIKING PUMPS	SG-05	2.6 - 42.4 LPM	0.7 - 11.2	34 Bar	500 psi	-	0.50	-	-
P-14	FUEL OIL TRANSFER PUMP	FUEL TANK	VIKING PUMPS	SG-05	2.6 - 42.4 LPM	0.7 - 11.2	34 Bar	500 psi	-	0.50	-	-
P-15	SUMP PUMP	GARAGE	GRUNDFOS	UNILIFT CC 5 - A1	1.26	20.0	17.9	6.0		115V/1/60 2.1A		5
P-16	SUMP PUMP	GARAGE	GRUNDFOS	UNILIFT CC 5 - A1	1.26	20.0	17.9	6.0		115V/1/60 2.1A		5
P-17	SUMP PUMP	GARAGE	GRUNDFOS	UNILIFT CC 5 - A1	1.26	20.0	17.9	6.0		115V/1/60 2.1A		5
P-18	SUMP PUMP	GARAGE	GRUNDFOS	UNILIFT CC 5 - A1	1.26	20.0	17.9	6.0		115V/1/60 2.1A		5
P-19	SUMP PUMP	GARAGE	GRUNDFOS	UNILIFT CC 5 - A1	1.26	20.0	17.9	6.0		115V/1/60 2.1A		5
P-20	SUMP PUMP	GARAGE	GRUNDFOS	UNILIFT CC 5 - A1	1.26	20.0	17.9	6.0		115V/1/60 2.1A		5
P-21	HRV PRE-HEAT COILS	2ND FLOOR MECH. ROOM	GRUNDFOS	MAGNA3 32-100	0.60	9.5	59.8	20.0	0.17	0.25	1,605	1,2,4
P-22	HRV PRE-HEAT COILS	2ND FLOOR MECH. ROOM	GRUNDFOS	MAGNA3 32-100	0.60	9.5	59.8	20.0	0.17	0.25	1,605	1,2,4

NOTES:

1. C/W VARIABLE SPEED DRIVE, REFER TO SPECIFICATION
2. PUMPS ARE SIZED FOR 50% PROPYLENE GLYCOL
3. ALL BRONZE AND STAINLESS STEEL CONSTRUCTION FOR POTABLE WATER APPLICATION C/W TIMER AND AQUASTAT
4. COORDINATE VOLTAGES WITH ELECTRICAL MOTOR/EQUIPMENT SCHEDULE ON DRAWING E603.
5. COORDINATE ELECTRICAL CONNECTION WITH ELECTRICAL CONTRACTOR
6. PACKAGED GLYCOL FILL SYSTEM WITH PLUG IN CONNECTION. REFER TO ELECTRICAL DRAWINGS FOR LOCATION.

FAN SCHEDULE															
TAG	MANUFACTURER	TYPE	MODEL	RPM	CLASS	AIR FLOW RATE (L/s) (CFM)		E.S.P. (Pa) (in.WC)		MOTOR (kW) (HP)		SONES	ACCESSORIES	NOTES	
EF-01	GREENHECK	I	SQ-20-07-0700-VG	1,139	-	3,153	6,680	125	0.50	1.492	2.00	1,139	15.8	IG, SH	1
SF-01	GREENHECK	I	AX-47-190-0619	3,500	-	2,832	6,000	498	2.00	3.730	5.00	3,500	44.0	SH	-

FAN TYPES:	C CENTRIFUGAL T TUBE AXIAL	R ROOF W WALL	I IN-LINE MF MIXED FLC	CE CEILING EXHAUST P PROPELLER	CU CENTRIFUGAL UP BLAST CF CEILING FAN
-------------------	-------------------------------	------------------	---------------------------	-----------------------------------	---

ABBREVIATIONS:	BG BELT GUARD AS ADJUSTABLE SHEAVES SC SOLID STATE SPEED CONTROL IG INLET GRILLE BD BACKDRAFT DAMPER F FILTER E EPOXY COATING IH INLET HOOD	MT MANUAL RESET TIMER NSW NON-SPARKING WHEEL SH SPRING HANGERS VP VIBRATION PADS SM SPRING MOUNT WC WALL CAP DS DISCONNECT SWITCH MDW MOTION DETECTOR, WALL MTD.	SD SCROLL DRAIN FC FACTORY CURB BS BIRDSCREEN MC MOUNTING COLLAR WH WEATHERPROOF HOUSING RC ROOF CAP AD ACCESS DOOR GN GOOSENECK
-----------------------	--	---	---

NOTES:	1. C/W ELECTRONICALLY COMMUTATED (EC) VARI-GREEN (VG) MOTOR.
---------------	--

FAN POWERED TERMINAL UNIT SCHEDULE															
TAG	ACCEPTABLE PRODUCT	INLET SIZE (mm)	AIRFLOW (L/s)	MAX. S.P. LOSS (Pa)	MAX. NC LEVEL AT MAX. AIRFLOW	HOT WATER REHEAT COIL									NOTES
						AIR SIDE		WATER SIDE				HEATING CAPACITY (kW)	NUMBER OF ROWS		
						ENTERING TEMP. (°C)	LEAVING TEMP. (°C)	FLOW RATE (L/s)	MAX. P.D. (kPa)	ENTERING TEMP. (°C)	LEAVING TEMP. (°C)			BRANCH PIPE SIZE (mm)	
FPTU-1	PRICE FDCLP2-10	150	250	45.0	55	15.0	23.0	0.030	0.30	50.0	40.0	13	2.25	1	1, 2, 4
FPTU-2	PRICE FDCLP2-30	205	504	52.0	55	15.0	23.0	0.060	0.75	50.0	40.0	13	3.50	1	1, 3, 5
FPTU-3	PRICE FDCLP2-30	205	492	52.0	55	15.0	23.0	0.060	0.75	50.0	40.0	13	3.50	1	1, 3, 4
FPTU-4	PRICE FDCLP2-30	205	490	52.0	55	15.0	23.0	0.060	0.75	50.0	40.0	13	3.50	1	1, 3, 5
FPTU-5	PRICE FDCLP2-10	180	293	62.0	55	15.0	23.0	0.030	0.30	50.0	40.0	13	2.40	1	1, 2, 4
FPTU-6	PRICE FDCLP2-10	150	232	15.0	55	15.0	23.0	0.030	0.30	50.0	40.0	13	1.88	1	1, 2, 4
FPTU-7	PRICE FDCLP2-10	180	330	75.0	55	15.0	23.0	0.030	0.30	50.0	40.0	13	2.43	1	1, 2, 4
FPTU-8	PRICE FDCLP2-10	150	240	15.0	55	15.0	23.0	0.030	0.30	50.0	40.0	13	1.88	1	1, 2, 4
FPTU-9	PRICE FDCLP2-10	180	227	75.0	55	15.0	23.0	0.030	0.30	50.0	40.0	13	2.43	1	1, 2, 4
NOTES:															
1. UNITS COMPLETE WITH ECM MOTORS.															
2. UNIT COMPLETE WITH 1-ROW MULTI-CIRCUIT STANDARD CAPACITY HEATING COIL															
3. UNIT COMPLETE WITH 1-ROW MULTI-CIRCUIT HGH CAPACITY HEATING COIL															
4. LEFT-HAND UNIT															
5. RIGHT-HAND UNIT															

FUEL TANK SCHEDULE																
TAG	ENERGY TYPE	MANUFACTURER	LOCATION	QTY	MODEL NUMBER	HEATING PERFORMANCE				PHYSICAL CHARACTERISTICS				NOTES		
						TANK VOLUME	DRY WEIGHT		WIDTH	LENGTH	HEIGHT					
							imp. GAL	(kg)				(lb.)	(in)		(in)	(in)
OUTDOOR TANK	FUEL OIL	WESTSTEEL	OUTDOORS, NORTH EAST SIDE OF BUILDING	1	HFV50000	49,376	10,861	6,818	15,000	2,995	117.0	6,998	246.0	2,995	117.0	02. PACKAGE FEATURES 01. Fuel Vault Model HFV-65000 02. Hood Mount Ladder 03. Containment Inspection Port - 2" Ø4 Gauge Stick 120 in (10ft) 05. Spilbox 24" 60L Cap comes with 2" Dip Port, 4" Spare 06. Normal Vent 3" 07. Filling Spare - 2" 09. Stick Heavy Duty with Bollards with Extension 09. Filling Spare - 4" 10. Nansetate LLC 5601 Contained 11. RTF Fill 3" Camlock with Overfill Protection 12. Lockable cap and spill box
DAY TANK	FUEL OIL	WESTSTEEL	SECOND FLOOR MECHANICAL ROOM	1	FOSC690	693	152	167	368	585	23.0	1,219	48.0	1,165	47.0	Durable all steel construction in a vertical oval design. Heavy gauge tank shell and die formed ends. All exterior surfaces prepared with a chemical wash and finished with a rugged and durable weather-resistant white powder coat. Heavy duty lifting lug(s) and end handles for easy installation and tank placement. Leg support bracket size is 1 1/2" NPT (quantity of 4) on Vacuum Mounting STANDARD FEATURES 01. 2" emergency vent inspection with lockable vent cap 02. 2" NPT spare fitting for pump, etc. 03. 2" NPT gauge fitting 04. 2" NPT spare or vent fitting 05. 2" NPT fit fitting 06. 1" NPT outlet or drain fitting

HEATING BOILER SCHEDULE (Based on Weil-McLain)																							
TAG	HEATING PERFORMANCE								FLUID SIDE				PHYSICAL CHARACTERISTICS										NOTES
	ENERGY TYPE	BOILER SYSTEM	LOCATION	QTY	NO.2 OIL INPUT		CSA OUTPUT		FLOW RATE		PRESS. DROP		DRY WEIGHT		WIDTH		LENGTH		HEIGHT		VENT DIA.		
					LPH	GPH	(kW)	(MBH)	(L/s)	(GPM)	(Pa)	(ft.WC)	(kg)	(lbs.)	(mm)	(in.)	(mm)	(in.)	(mm)	(in.)	(mm)	(in.)	
B-1	FUEL OIL	COBALT BOILER SYSTEM CS-600WL-2P	2nd FLOOR MECHANICAL ROOM	1	19.7	5.20	187	639	5.7	90.0	1,495	0.50	966	2,130	759	29.9	1,083	42.6	1,202	47.3	254	10.0	1.2
B-2	FUEL OIL	COBALT BOILER SYSTEM CS-600WL-2P	2nd FLOOR MECHANICAL ROOM	1	19.7	5.20	187	639	5.7	90.0	1,495	0.50	966	2,130	759	29.9	1,083	42.6	1,202	47.3	254	10.0	1.2
NOTES: 1. PERFORMANCE BASED ON 50% PROPYLENE GLYCOL / 50% WATER SOLUTION. 2. BOILERS COMPLETE WITH 690 kPa (100 PSIG) RELIEF VALVES.																							



109-374 River Avenue, Winnipeg MB Canada, R3L 0E4

COPYRIGHT:

Drawings and specifications, or instruments of service are the property of the architect. The copyright in the same being reserved to Verne Palmer Architecture Incorporated. No reproduction may be made without the permission of the architect and when made, must bear his name. All prints to be returned to the architect.

The general contractor and/or project manager shall verify dimensions and data noted herein with conditions on the site and is held responsible for reporting any discrepancy to the architect for adjustment. Do not scale the drawings.

CONSULTANTS:

NOTES:

PERMIT / STAMP:

1	22/06/02	ISSUED FOR ADDENDUM
0	22/05/12	ISSUED FOR CONSTRUCTION
REV	DATE	DESCRIPTION

CLIENT:
CITY OF IQALUIT
OPERATIONS CENTRE

1549 FEDERAL ROAD
IQALUIT, NUNAVUT
X0A 0H0

CLIENT PROJECT NO. 820837

MECHANICAL SCHEDULES

SCALE: N/A
PROJECT NUMBER: 2019.00800
DRAWN BY: WGC

M60 1

1	22/06/02	ISSUED FOR ADDENDUM
0	22/05/12	ISSUED FOR CONSTRUCTION
REV	DATE	DESCRIPTION

CLIENT:
CITY OF IQALUIT
OPERATIONS CENTRE

1549 FEDERAL ROAD
IQALUIT, NUNAVUT
X0A 0H0

CLIENT PROJECT NO. 820837

TITLE:
SECOND FLOOR
UNDER FLOOR DRAINAGE

SCALE: 1 : 100
PROJECT NUMBER: 2019.00800
DRAWN BY: WGC

P101

