



Project:	2022-RFT-026 821131 – Solid Waste WTS Construction		
Addendum No.	02	No. of Pages:	6
Date:	2022-07-21	Doc. No.:	P7201-1591092266-176(1.0)

The following change(s) in the Request for Proposal Documents are effective immediately.
This Addendum forms part of the Contract Documents.

The purpose of this Addendum is to clarify and answer for bidder's question on tender 2022-RFT-026 issued for bid on July 12, 2022.

Question 1:

PART 1 – PROCUREMENT AND CONTRACT REQUIREMENTS

Regarding item 27.4 the contract award date of September 20, 2022, will be too late for last 2022 sealift and it will be not possible to ship any material for 2022 works. Is it a possibility to have the City of Iqaluit pre-order the thermosiphon material to have it delivered this fall to Iqaluit on the last sealift? This could be managed as an allowance.

Response 1:

Supply & delivery of material is the Contractor's responsibility, any impact on the project timelines, need to be highlighted in the bid submission form.

Question 2:

MECHANICAL DRAWINGS

The mechanical drawings are very light, and they are difficult to read especially when printed. Please provide darker drawing so that they are easier to read.

Response 2:

We can't see any issue with the quality of the mechanical drawing. We did a test print out and it looks fine. You may need to use different software to open PDF drawings or change the setting to improve the quality. There is a setting in Adobe Reader under 'Edit' 'Preferences' 'Smooth Line Art'. If it is turned 'off' there is more contrast between the dark and light lines (plumbing lines and arch background). It might improve the image.

Question 3:

SPECIFICATION 08 33 00

Item 1.1.1 states that this section is for "interior location". Please provide specification for exterior location.

Response 3:

Exterior Overhead Coiling Doors are part of 13 34 19 Metal Building Systems, refer to 2.2.7.

Question 4:

SPECIFICATION 11 40 00 WTS EQUIPMENT

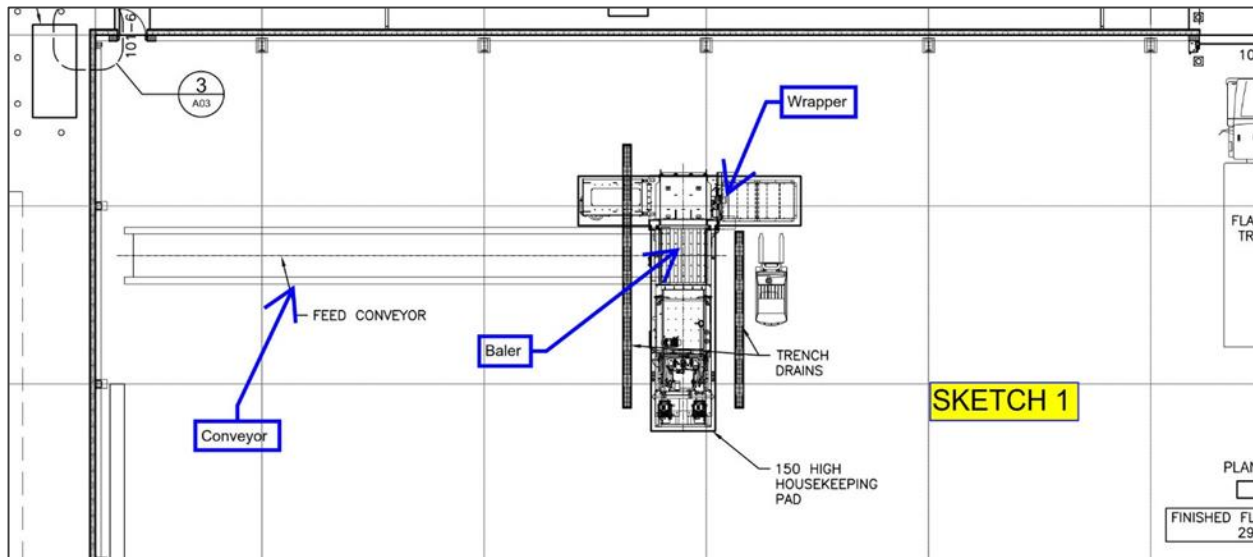
Please provide location on WTS-A01 for following items:

- 2.1 Automatic municipal solid waste baling unit
- 2.2 Steel belt conveyor
- 2.3 Bale Wrapper
- 2.5 Tire Shear and de-rimmer
- 2.6 Portable Metal Baler/Logger

Please provide a description of highlighted items on drawing WTS-A01, and confirm they are to be provided within this project.

Response 4:

The Tire Shear and De-rimmer and the Portable Metal Baler/Logger are to be delivered to the site. Please see below for the proposed location of the Conveyor, Baler and Wrapper.

**Question 5:**

SPECIFICATION 11 50 00

- Item 2.3.1 – Could the load cells be electronic cells instead of hydraulic?
- Item 2.5.1 – The digital indicator IQ355 is no longer available and is normally substituted by model IQ720. Please advise.
- Item 3.7.5 – Regarding the charges and expenses associated with repairing any defect covered under the warranty to be covered by the contractor, please confirm that it applies to the (2) year all-inclusive warranty, understanding that this clause cannot apply to an indefinite term as a lifetime guarantee.

Response 5:

- Electronic load cells are acceptable.
- This indicator is acceptable.
- The clause applies to the (2) year all-inclusive warranty.

Question 6:

DRAWING WTS-A12

Please provide the location of the Attendant Building.

Response 6:

The Attendant Building is to be delivered and installed at the Municipal Solid Waste Landfill located off of the Northwest Aggregate Deposit Road approximately 6.5 km from the Waste Transfer Station.

Question 7:

DRAWING WTS-C04 AND C06

Please provide a section or description of "Miscellaneous Metals/White Goods Storage Pad" and "Tire Storage Pad". Confirm if they are concrete or granular pads.

Response 7:

The granular pads are not elevated and are to be constructed as per detail "Typical Site Section" on Sheet WTS-C05.

Question 8:

DRAWING WTS-C01

- Please provide info and volume or detail on “Misc. Debris to be removed” asked on this drawing.
- What do you mean by “To be removed” for building shown on this drawing? Demolition or Relocation?

Response 8:

- Please see photos below, taken on July 19, 2022.
- All site material to be demolished if required and removed from the site for disposal or reuse/recycling.



Photo 1 – Facing West



Photo 2 – Facing West 2



Photo 3 – Facing West 3



Photo 4 – Facing North from L shaped Structure

Question 9:

DRAWING WTS-C02

- The culvert type 2100 x 1500 CSPA shown on this drawing is not standard according to suppliers. Is it possible to install 2130 x 1400mm or we would have to go to 2230 x 1700mm?
- Does the project have the Nunavut Water Board licence to do this work, or it will have to be approved by them before work can start?

Response 9:

- 2230 x 1700 would be required.
- The specified work has been approved by the Nunavut Water Board and incorporated into the City's current water license. The City will be issuing a letter to the Nunavut Water Board notifying them of the anticipated construction start date.

Question 10:

DRAWING WTS-C05

- Please clarify the details for the sliding gates. The length for the simple and double gates are not specified.
- The gate detail specifies the frame to be aluminum and fences and gates specs section 32 31 13 only talks of galvanized steel, which is it for the gates?

Response 10:

- The site entrance gate opening is approximately 16 m. The road to Qaqqamiut Court gate is approximately 9 m.
- Given the width of the gates aluminum is preferred.

Question 11:

DRAWING WTS-S03

Please confirm that the topping required for the slab is 25 mm only for the Emerytop 400, given that the Emericrete is usually applied with a ratio (5-8 kg/2) instead of a thickness.

Response 11:

The topping must be 25mm thick. Should an alternate supplier be proposed, (Other than Emerytop 400), it must be equivalent, which includes having the same thickness (25mm). Should an alternate be proposed, it must also be approved by the design engineer.

Question 11:

DRAWING WTS-E01

Some equipment are shown on this drawing, please confirm if they are part of our scope of work as they are not listed on section 11 40 00.

Grid B-4	Chain roller
Grid F-6	Modular push rob bin and incline screw auger shedder and RI 36/26 schredder infeed conveyor
Near Grid 9 (B-E)	Horizontal screw auger (to feed boiler stoker feeder)
Near Grid F (10-12)	KKF drag chain conveyor, screw auger KKF discharge conveyor and rotary drum magnet
Between Grid 11-12	Vecoplan VHZ 10100XL

Response 11:

These items are part of the scope of work. Additional clarifying information to follow in the next addendum.

Question 12:

We respectfully ask The City of Iqaluit to extend the deadline by 4 weeks as the majority of suppliers, contractors and subcontractors who are based in Quebec are closing for 2 weeks at the end of July and will not be working on the bid.

Response 12:

The Tender closing date will be extended by 2 weeks.

ACTION	DATE
Opening Date for RFT	July 12, 2022
Revised Deadline for Submitting Inquiries	August 17, 2022, at 3 PM
Revised Deadline for Inquiry Response	August 19, 2022
Revised Closing Date for RFT	August 26, 2022, at 3 PM

Project Name:

2022-RFT-026 – Solid Waste WTS Construction

Addendum No.:

2

Revised Public Opening	August 26, 2022, at 4 PM
Revised Approvals	September 27, 2022
Revised Contract Award Date	October 4, 2022
Revised Project Kick-Off	October 12, 2022
Revised Mobilization	October 19, 2022
Revised Substantial Performance	December 13, 2024
Revised Warranty Start Date	December 13, 2024
Revised Warranty End Date	December 12, 2025
Revised Completion	December 12, 2025