

# THE CORPORATION OF THE CITY OF IQALUIT, NU

## BY-LAW No. 823

### LAND DISPOSAL BY-LAW

**A BY-LAW** of the City of Iqaluit, a Municipal Corporation in Nunavut authorizing the City to dispose of a leasehold interest in land, pursuant to Section 131 of the Cities, Towns and Villages Act, R.S.N.W.T., 1988 c.C-8;

**AND WHEREAS** certain land is available for disposal by way of lease by the City of Iqaluit;

**NOW THEREFORE** the Council of the Municipal Corporation of the City of Iqaluit in a duly assembled meeting enact as follows:

1. That the Municipal Corporation of the City of Iqaluit is hereby authorized to dispose of the land listed in the attached Schedule "A" which forms part of this by-law, by way of a lease for a term of 30 years.
2. That the Mayor and Chief Administrative Officer of the City of Iqaluit, or lawful deputy of either of them, are hereby authorized in the name and on the behalf of the City of Iqaluit, to execute all such forms of application, deeds, leases, indentures, and other documents as may be necessary to give effect to this By-law and to affix thereto the corporate seal of the City of Iqaluit as the act and deed thereof, subscribing their names in attestation of such execution.
3. That this By-law shall come into effect upon receiving third reading.

THIS BY-LAW READ a First Time this 22 day of November, 2016 A.D.

---

Madeleine Redfern  
Mayor

---

Muhamud Hassan  
Chief Administrative Officer

THIS BY-LAW READ a Second Time this 22 day of November, 2016 A.D.

---

Madeleine Redfern  
Mayor

---

Muhamud Hassan  
Chief Administrative Officer

READ a Third and Final Time this 13 day of December, 2016 A.D.

---

Madeleine Redfern  
Mayor

---

Muhamud Hassan  
Chief Administrative Officer

## **SCHEDULE "A"**

### **LAND DISPOSAL BY-LAW #823**

#### **Apex Infill Phase B**

As shown in the attached sketch plan, dated August 22, 2016:

Lot 11	Comprising of part of Block 3, Group 1084, Plan 1986, City of Iqaluit
Lot 12	Comprising of part of Block 3, Group 1084, Plan 1986, City of Iqaluit
Lot 13	Comprising of part of Block 3, Group 1084, Plan 1986, City of Iqaluit
Lot 15	Comprising of part of Block 3, Group 1084, Plan 1986, City of Iqaluit
Lot 16	Comprising of part of Block 3, Group 1084, Plan 1986, City of Iqaluit
Lot 17	Comprising of part of Block 3, Group 1084, Plan 1986, City of Iqaluit
Lot 18	Comprising of part of Block 3, Group 1084, Plan 1986, City of Iqaluit
Lot 19	Comprising of part of Block 3, Group 1084, Plan 1986, City of Iqaluit
Lot 20	Comprising of part of Block 3, Group 1084, Plan 1986, City of Iqaluit
Lot 21	Comprising of part of Block 3, Group 1084, Plan 1986, City of Iqaluit



A copy of this plan is filed in the Land Titles Office for MANAWATU, on \_\_\_\_\_

CANADA LANDS SURVEYS RECORDS

### PLAN AND FIELD NOTES OF SURVEY OF LOTS 11 TO 22, BOTH INCLUSIVE AND R109 and R110

COMPRISING OF PART OF BLOCK 3, GROUP 1084,  
PLAN 71535 CLSR, 1986 LTO

Local, Nunavut

SCALE 1:500



This plan was prepared by the author and optimum readability for this plan is 600PI by 600PI.

THIS SURVEY WAS EXECUTED DURING THE PERIOD OF \_\_\_\_\_ JULY 24, 2016, TO \_\_\_\_\_

JULY 24, 2016 BY D. S. URSO, C.L.S., #1093

**LEGEND:**

- BEARINGS ARE UTM GRID DETERMINED FROM THE BEARING BETWEEN CHORD A 4400002 BEING 3187317" AND ARE REFERRED TO THE CENTRAL MERIDIAN OF ZONE 19 (09° WEST).
- DISTANCES ARE HORIZONTAL AT GENERAL GROUND LEVEL AND ARE EXPRESSED IN METRES.
- CLS "77" STANDARD POST FOUND
- OSP CONTROL MONUMENT
- CLS "77" STANDARD POST PLACED
- LAND DEALT WITH BY THIS PLAN BOUNDED THIS \_\_\_\_\_
- THIS PLAN SHOWS THE HORIZONTAL BEARINGS, LEVS, DISTANCES IN METRES TO COMPUTE CURVED DISTANCES, HORIZONTAL GROUND LEVEL DISTANCES BY THE APPLICABLE CORRECTED SCALE FACTOR OF CURVED.
- ALL MONUMENTS PLACED DURING THIS SURVEY ARE MARKED WITH LOT NUMBERS AND THE YEAR OF SURVEY PLUS "P" FOR ROAD WHERE APPLICABLE.
- THE STAKES FOR FOUND NO EVIDENCE.
- OSP STAKES FOR FOUND EVIDENCE DISTURBED BY ROAD CONSTRUCTION
- PRO STAKES FOR MARKED

UTM Coordinates - NAD83 (CSRS 2010.0)  
Zone 19, Central Meridian 69° west

Point	Northing	Easting
1090002	72699312.86	524331.44
00100	7269645.91	527148.33
524	7269645.91	527148.33
524	7269645.91	527148.33
524	7269645.91	527148.33
704	7269645.91	527148.33
712	7269645.91	527148.33
719	7269645.91	527148.33
721	7269645.91	527148.33
781	7269645.91	527148.33
773	7269645.91	527148.33

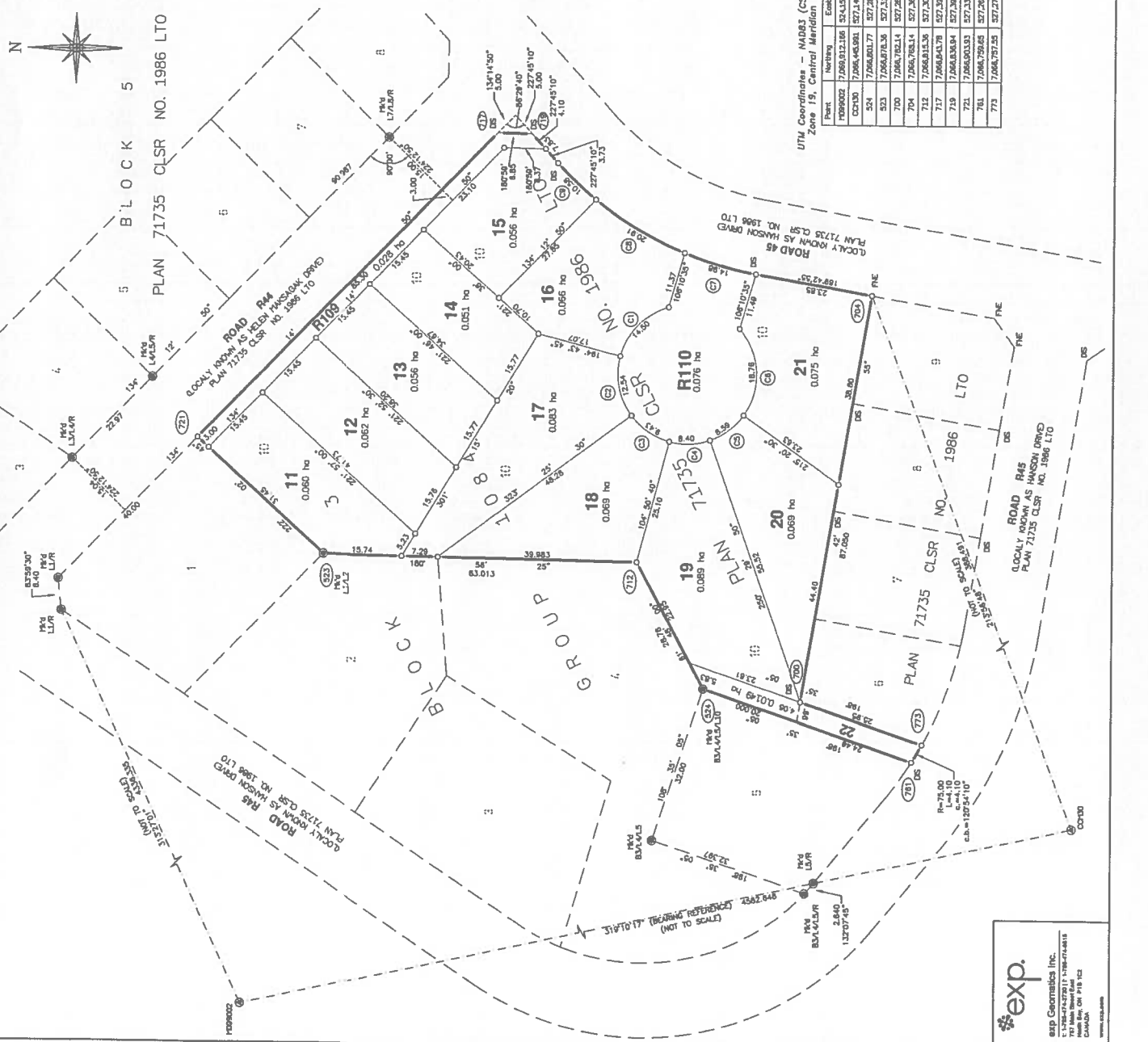
Curve	Lot	Radius	Length	Chord	Chord bearing
(1)	16	1400	1450	1336	31°22'30"
(2)	17	1400	1254	1213	79°53'30"
(3)	18	1400	943	925	5°49'00"
(4)	19	1400	840	827	357°47'45"
(5)	20	1400	859	846	322°50'20"
(6)	21	1400	1876	1729	89°58'30"
(7)	23	7000	1498	1498	15°49'30"
(8)	16	7000	2081	2081	30°31'00"
(9)	25	7000	1056	1057	47°54'15"



On this 24th day of July 2016  
DAVE S. URSO C.L.S.  
CERTIFIED CORRECT

Department of Natural Resources  
REG. Section 29, Canada Lands Surveys Act  
CONFIRMED

MANAGER, CADASTRAL SERVICES, WEST/NORTH  
Surveyor General Branch



**exp.**  
GeoGraphics Inc.  
11-2064242300 11-2064242300  
787 John Street East  
LAWSON, ON P1B 1G1  
www.exp.ca

